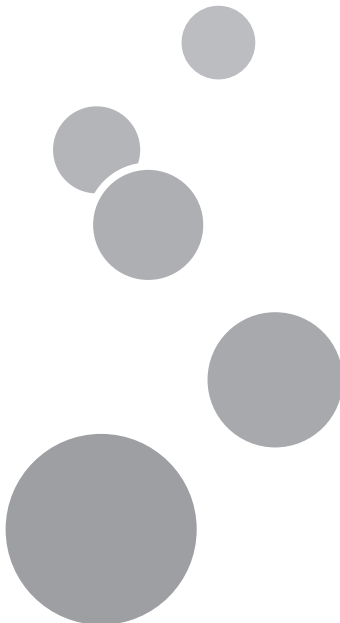




## RIP Settings Guide

Installing RIPCenter/PosterShop	1
Functions for RICOH Pro L5130/L5160	2
Restrictions on Using RIPCenter/PosterShop	3
Appendix	4

For information not in this manual, refer to the PDF files on the supplied CD.





# TABLE OF CONTENTS

- Getting Started..... 3
  - Software Described in This Manual..... 3
  - About this Manual..... 3
  - Disclaimer..... 3
  - Notes..... 3

## 1. Installing RIPCenter/PosterShop

- Checking the Operating Environment..... 5
- Installation Setup..... 7
  - Establishing a Network Connection between Printer and Computer..... 7
  - Computer Setup..... 7
  - Preparing the Media for Installation..... 8
- Installing the Software..... 9

## 2. Functions for L5130/L5160

- Functions on the Main Menu..... 11
  - Printer Area..... 12
  - Jobs Ready to Print Area/Buffered Jobs Area..... 12
  - Information Area..... 12
  - Preview Area..... 14
  - Job Control Window..... 14
- Changing Printer Settings..... 16
  - Opening the Printer Settings Dialog Box..... 16
  - Printer Settings Dialog Box..... 20
- Other Functions..... 23
  - Updating the Media Width Information Automatically..... 23
  - Specifying SNMP Community Name..... 23
- Functions Usable with PosterShop..... 26
  - Specifying Resolution..... 26
  - Specifying Multilayer Printing..... 27

## 3. Restrictions on Using RIPCenter/PosterShop

- Restrictions on RIP-Queue..... 31
- Restrictions on Job Editor..... 34
- Restrictions on the Virtual Printer..... 36
- Restrictions on Media Manager..... 37

---

## 4. Appendix

---

Trademarks.....	39
-----------------	----

---

# Getting Started

---

## Software Described in This Manual

---

Software	Abbreviated Name	Note
ONYX RIPCenter	RIPCenter	This RIP software is supplied with the machine. You can use RIP-Queue, Job Editor, and Cut-Server.
ONYX PosterShop	PosterShop	This is optional RIP software. In addition to RIP-Queue, Job Editor, and Cut-Server, you can also use Layout Tool and Media Manager.

---

## About this Manual

---

This manual describes the following:

- How to install RIPCenter/PosterShop
- RIPCenter/PosterShop functions customized for RICOH Pro L5130/L5160
- Restrictions on using RIPCenter/PosterShop

---

## Disclaimer

---

To the maximum extent permitted by applicable laws, in no event will the manufacturer be liable for any damages whatsoever arising out of failures of this product, losses of documents or data, or the use or non-use of this product and operation manuals provided with it.

---

## Notes

---

Contents of this manual are subject to change without prior notice.

Some illustrations or explanations in this guide may differ from your product due to improvement or change in the product.



# 1. Installing RIPCenter/PosterShop

This section explains how to install RIPCenter and, optionally, PosterShop on the computer. The installation procedure is the same in both cases.

## Checking the Operating Environment

To use RIPCenter/PosterShop, the following environment is required:

### Configuration

Desktop computer

### Operating system

- Windows 7 Professional (64-bit)
- Windows 8.1 Pro (64-bit)
- Windows 10 Pro (64-bit)

32-bit operating systems are not supported.

### CPU

Intel Core i7/i9

AMD FX and later models

### Memory

16 GB or greater

### Available hard disk space

750 GB or greater

- The available hard disk space mentioned above is required for storing temporary data when printing. The required space (reference value) for basic printing is as follows.
  - For printing with a print width of 1615 mm, image length of 50 m, color composition of 4C, resolution of 1200 dpi × 1200 dpi, and a single color layer (color): approx. 179 GB
  - For printing with a print width of 1615 mm, image length of 50 m, color composition of 4CW, resolution of 900 dpi × 600 dpi, and three color layers (color/white/color): approx. 153 GB
- The greater the image length, the greater the temporary data size becomes.
- The temporary data is deleted after printing or when printing is cancelled or has failed.

### Hard disk rotational speed

7200rpm

### USB ports

2 or more

**Screen resolution**

1280 × 1024 or greater



# Installation Setup

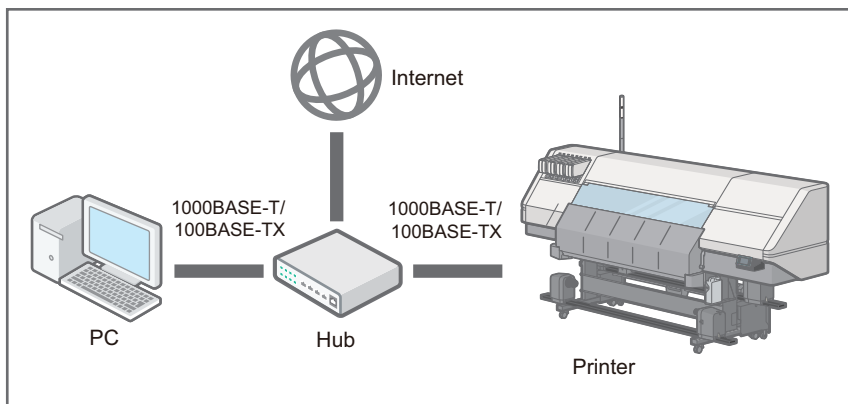
## Establishing a Network Connection between Printer and Computer

1

### 1. Connect the printer and computer to the network.

The supported interface is 1000BASE-T/100BASE-TX.

For information about the connection procedure, see "Connecting the Cable" and "Ethernet Configuration", Operating Instructions.



EDP003

### 2. Make a note of the printer's IP address or host name.

This is required for installing RIPCenter/PosterShop.

## Computer Setup

Before installation, do the following:

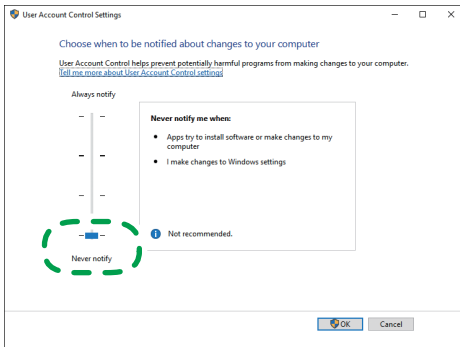
1. Log into the account with administrator privileges.
2. Temporarily disable the anti-virus software.
3. Set the user account control (UAC) setting to "Never notify".

- Windows 7

[Start] menu → [Control Panel] → [User Accounts] → [User Accounts] → [Change User Account Control settings] → [Never notify] (bottommost item)

- Windows 10

[Start] menu → [Windows system] → [Control Panel] → [User Accounts] → [User Accounts] → [Change User Account Control settings] → [Never notify] (bottommost item)



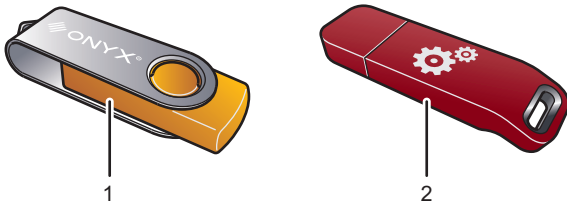
EDP004

---

## Preparing the Media for Installation

---

Prepare the media required for installation as follows:



DWT811

### 1. USB flash drive

The programs to be installed are on this.

### 2. USB hardware key

To install and use RIPCenter/PosterShop, plug it into the computer.

# Installing the Software

1. Plug the USB hardware key ("hardware key") into one of the computer's USB ports.
2. Plug the USB flash drive into another of the computer's USB ports.

If the Auto Play dialog box appears, select the folder.

3. In Explorer, open the USB flash drive and double-click "Install\_ONYX.exe" to run it.
4. Click [INSTALL].
5. Read the end-user license agreement (EULA), and then click [Yes].
6. To install the hardware key driver, click [OK].

This will take a while.

Depending on the computer's operating environment, Microsoft Visual C++ 2015 Redistributable may be installed.

7. Select where to install the file. To install the file on another hard drive, change only the name of the drive in the path and leave the folder name unchanged.

Example: C:Onyx18 → D:Onyx18

8. In the Printers area at the bottom right of the window, check the printer to be used.
9. Click [Install] to start installation.

This will take a while.

After the web browser opens and the description on the UAC and administrator privileges appear, close the browser.

10. Once installation is complete, click [Finish].

RIP-Queue automatically starts.

11. If the wizard to register myonyx appears, click [Next] to register or [Cancel] to skip registration.
12. On the "Configure Printer Port" window, select "TCP/IP Printer" and then click [Configure].
13. In "IP address", enter the printer's IP address or host name.
14. Make sure that "Port Number:" is <Port52026>.
15. Click [Test] to test the connection.

If correctly connected to the printer, a message reporting that a valid IP address has been found appears. If the connection test fails, set the printer to a status with "Ready" displayed on its control panel and retry the connection test.

16. Click [OK] twice.

Installation of RIPCenter/PosterShop is now complete.



## 2. Functions for L5130/L5160

This section explains the RIPCenter/PosterShop functions customized for RICOH Pro L5130/L5160. For information about other functions and operations, see the RIPCenter/PosterShop manuals.

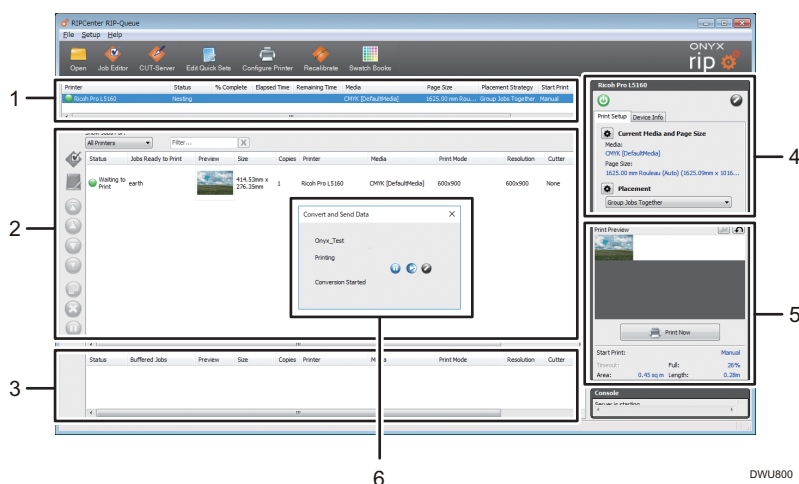
### ★ Important

- When using RIPCenter/PosterShop, keep the USB hardware key connected to the computer.

2

## Functions on the Main Menu

The main menu comprises the following areas and window:



### 1. Printer Area

Displays usable printers.

### 2. Jobs Ready to Print Area

Displays print jobs before or during printing.

### 3. Buffered Jobs Area

Displays completed print jobs and archived jobs.

### 4. Information Area

Displays the list of information related to printers.

### 5. Preview Area

Displays the print job preview.

### 6. Job Control Window

This appears as a pop-up window during printing. You can monitor and control the print job while printing.

## Printer Area

For details about the displayed location of the printer area, see page 11 "Functions on the Main Menu".

Printer	Status	% Complete	Elapsed Time	Remaining Time	Media	Page Size	Placement Strategy	Start Print
Ricoh Pro L5160	Nesting				CMYK [DefaultMedia]	1,625 Meter Roll	Group Jobs Together	Manual

DWU808

### 1. Printer

Displays the printer model name.

## Jobs Ready to Print Area/Buffered Jobs Area

For details about the displayed location of the Jobs Ready to Print area and Buffered Jobs area, see page 11 "Functions on the Main Menu".

Status	Jobs Ready to Print	Preview	Size	Copies	Printer	Media	Print-Mode	Resolution	Cutter
Waiting to Print	earth		414.53mm x 276.35mm	1	Ricoh Pro L5160	CMYK [DefaultMedia]	600x900	600x900	None

Status	Buffered Jobs	Preview	Size	Copies	Printer	Media	Print-Mode	Resolution	Cutter

DWU809

### 1. Resolution

Displays the resolution specified in the profile setting.

#### ↓ Note

- If the resolution does not appear, right-click the header, and then check "Resolution".

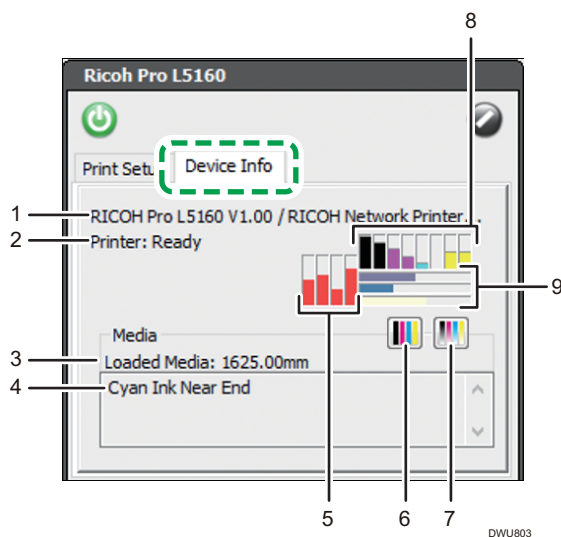
## Information Area

For details about the displayed location of the Information area, see page 11 "Functions on the Main Menu".

### Device information menu

In the Information area, click the [Device Info] tab to display the Device Information menu.

The information retrieved from the printer is listed. You can also print the nozzle check pattern and recovery check pattern.



### 1. Detailed model name

Displays the printer model name in detail.

### 2. Printer status

Displays the printer status.

### 3. Media width

Displays the media width automatically detected by the printer (in mm to two decimal places).

You can update the media width information automatically. For details, see page 23 "Updating the Media Width Information Automatically".

### 4. Error/warning message

Displays error and warning messages.

### 5. Heater setting (present machine setting)

Horizontally displays the heater temperature in the order pre-heater > print-heater > post heater > cure-heater using a bar chart and displays the value indicated by each bar when you hover over it.

### 6. Printing the nozzle check pattern

Prints the nozzle check pattern if you click it.

### 7. Printing the recovery check pattern

Prints the recovery check pattern if you click it.

### 8. Ink level in the ink cartridges

Horizontally displays the ink levels in ink cartridges 1 to 8 using a bar chart and displays the value indicated by each bar when you hover over it.

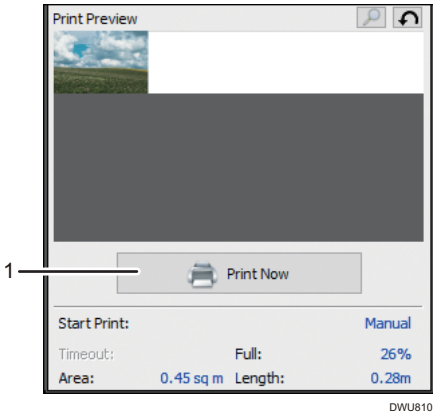
### 9. Level in other supplies

Vertically displays the level in the waste ink bottle, cleaning cartridge, and flushing cartridge using a bar chart and displays the value indicated by each bar when you hover over it.

## Preview Area

2

For details about the displayed location of the Preview area, see page 11 "Functions on the Main Menu".

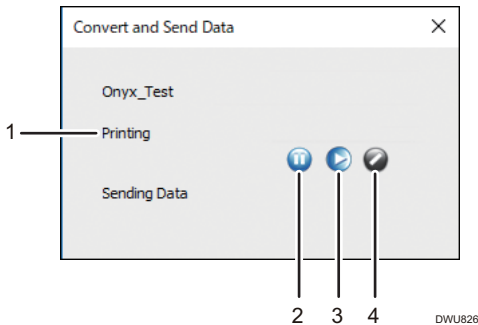


#### 1. [Print Now]

Click this to print. This is effective when both the printer and job are in the waiting status.

## Job Control Window

This appears as a pop-up window during printing. You can monitor and control the print job while printing.





**1. Job status**

Displays the print job status.

**2. Suspend**

Click this to suspend the ongoing job.

**3. Resume**

Click this to resume the suspended job.

**4. Cancel**

Click this to cancel the ongoing or suspended job.

# Changing Printer Settings

You can change the printer settings configured by the profile.

Also, using Media Manager, you can change the printer settings when creating or editing the profile. When using Media Manager, the optional PosterShop is required.

2

## Opening the Printer Settings Dialog Box

You can change the printer settings by any of the following means:

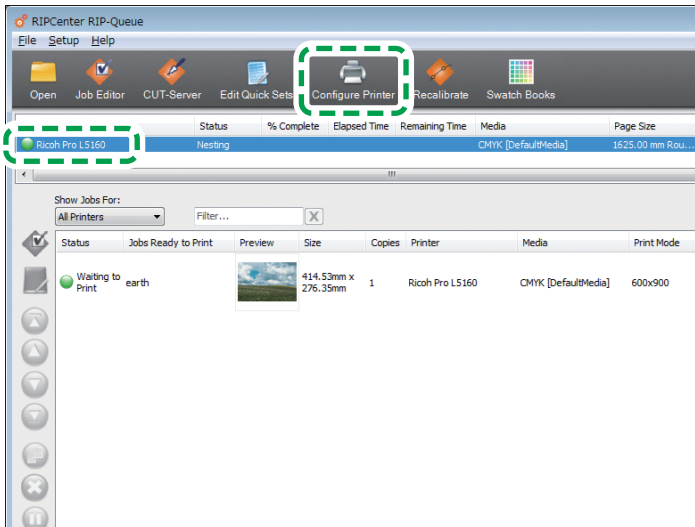
- Profile (changing via RIP-Queue)
- Profile (changing via Media Manager)
- Print Job
- Quick Sets

The procedure to open the dialog box differs.

### Profile (changing via RIP-Queue)

Using RIP-Queue, change the printer settings in the profile. The changed settings are applied as the default settings when processing the job.

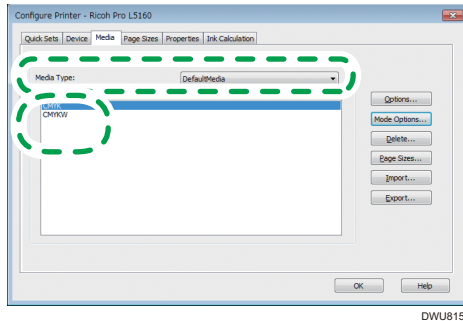
1. Select the printer, and then click [Configure Printer].



DWU814

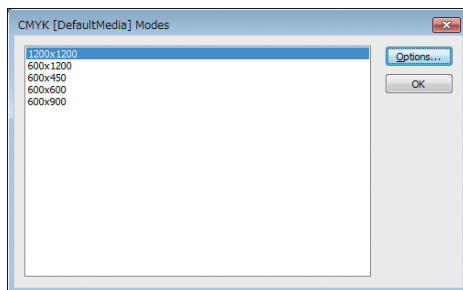
2. After the confirmation dialog box appears, click [Yes].
3. Click the [Media] tab.

#### 4. Select [Media Type:] and the media profile, and then click [Mode Options...].



DWU815

#### 5. Select the mode, and then click [Options...].



The printer settings dialog box is displayed. See page 20 "Printer Settings Dialog Box".

## Profile (changing via Media Manager)

When editing the media profile via Media Manager, change the printer settings. To edit the media profile, the optional PosterShop is required.

The changed settings are applied as the default settings when processing the job.

### 1. Launch Media Manager, and then open the media profile edit menu (ICC Workflow).

The procedure varies depending on whether you create a new profile or edit an existing one.

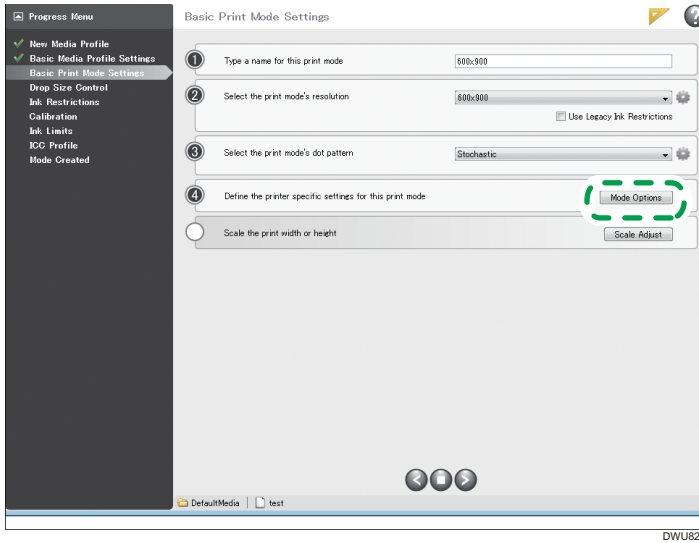
Creating a new profile

- [Create Profiles] → [Create a new Media Profile]

Editing an existing profile

- [Edit Profiles] → [Edit an existing Media Profile]
- [Media Library] → Select the media profile, and then click [Edit].

2. In "Basic Print Mode Settings", click No. 4 [Mode Options].

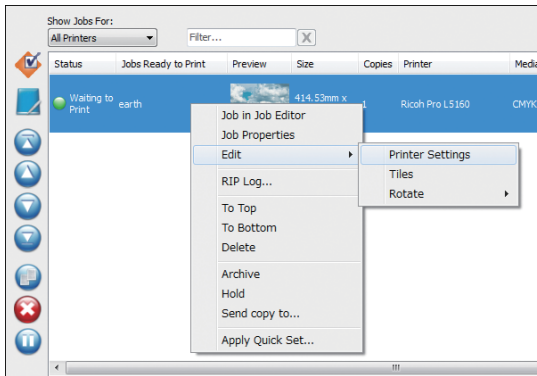


The printer settings dialog box is displayed. See page 20 "Printer Settings Dialog Box".

## Print job

Change the printer settings for each print job.

1. Right-click on the job, point to [Edit], and then select [Printer Settings].



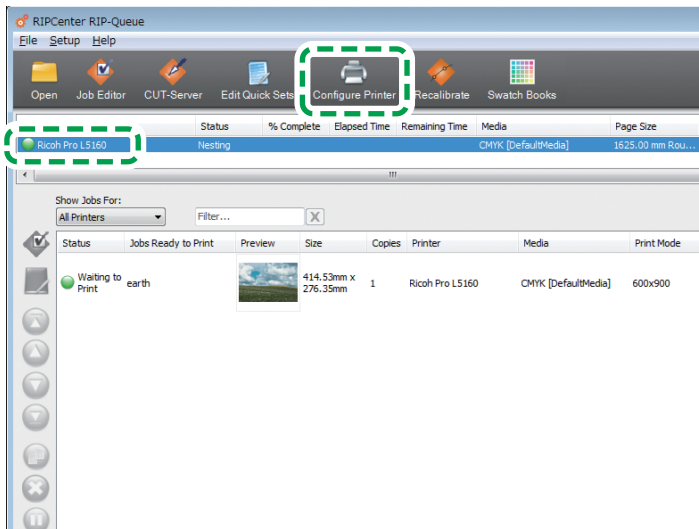
The printer settings dialog box is displayed. See page 20 "Printer Settings Dialog Box".

## Quick Sets

Change the printer settings via Quick Sets.

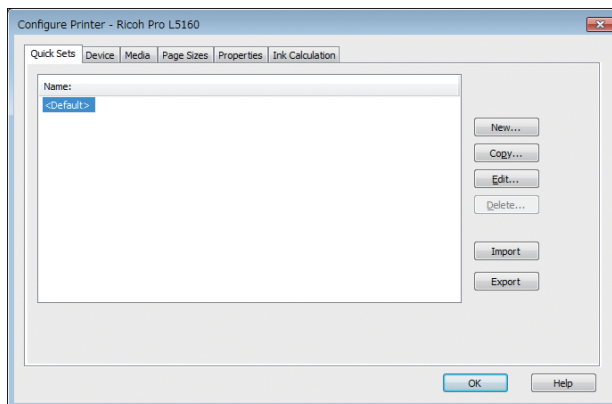
Using Quick Sets, you can save settings and apply them to new and existing print jobs. For details about Quick Sets, see the RIPCenter/PosterShop manuals.

1. Select the printer, and then click [Configure Printer].

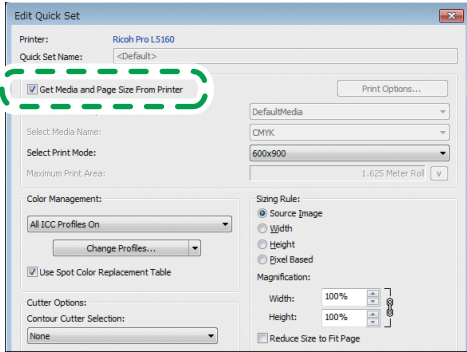


DWU814

2. After the confirmation dialog box appears, click [Yes].
3. Click the [Quick Sets] tab.
4. Select a Quick Sets setting and then click [Edit...].

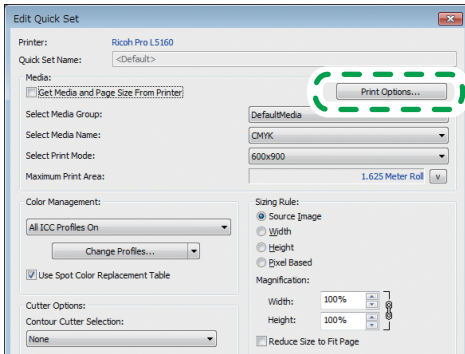


5. Uncheck [Get Media and Page Size From Printer].



DWU816

6. Click [Print Options...].



DWU817

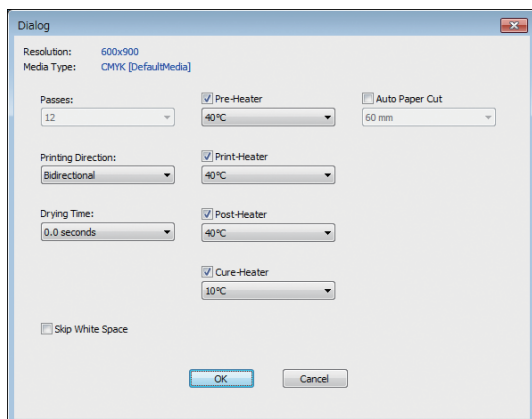
The printer settings dialog box is displayed. See page 20 "Printer Settings Dialog Box".

**Note**

- You can also change this setting with [Edit Quick Sets] on the toolbar.

## Printer Settings Dialog Box

The initial value of each printer setting varies depending on the profile.



**Setting items**

Items	Selectable values	Description
Passes	600×450: 6 scans 600×600: 8 scans 600×900: 12 scans 600×1200: 16 scans 1200×1200: 32 scans	The pass number depends on the resolution.
Printing Direction	Unidirectional Bidirectional	To improve the image quality, select [Unidirectional]. To improve the throughput, select [Bidirectional].
Drying Time	0.0–9.9 seconds (in units of 0.1 seconds)	Specify the ink drying time for each scan.  If blurring occurs at the boundary between different colors, it may be reduced by increasing the ink drying time. However, if you increase it too much, lines may become thick.
Skip White Space	On/Off	If enabled, the print head skips the areas where nothing is to be printed.  This shortens the time to complete of printing, but it may affect the image quality because of insufficient drying time.

Items	Selectable values	Description
Pre-Heater	On/Off 20–70°C (68–158°F)	Specify the heater settings. Specify these settings according to the type and properties of the media being used. After decreasing the heater temperature to secure sufficient drying time, change the printer settings as follows:
Print-Heater	On/Off 20–70°C (68–158°F)	
Post-Heater	On/Off 20–95°C (68–203°F)	
Cure-Heater	On/Off 20–95°C (68–203°F)	<ul style="list-style-type: none"> <li>• Increase the value in "Drying Time".</li> <li>• Set "Printing Direction" to "Unidirectional".</li> <li>• Select a profile with a higher resolution (more passes).</li> </ul> <p>Depending on the operating environment, increasing the heater temperature may cause the machine's interior temperature to exceed the permitted range. Be careful not to increase the heater temperature too much.</p>
Auto Paper Cut	On/Off	If enabled, the paper is automatically cut after printing.
	60 mm (2.36 in) 80 mm (3.15 in) 100 mm (3.94 in)	Specify the margin when using the Auto Paper Cut function.



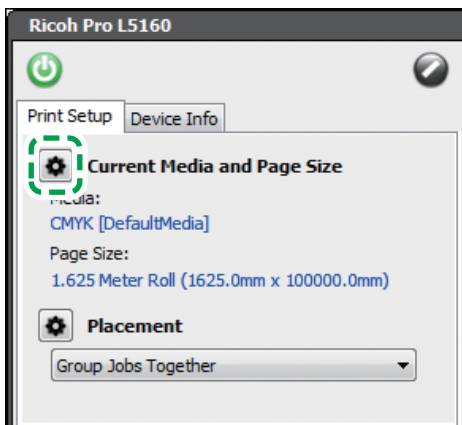
# Other Functions

## Updating the Media Width Information Automatically

This automatically updates the information of the media width to the current one retrieved from the printer.

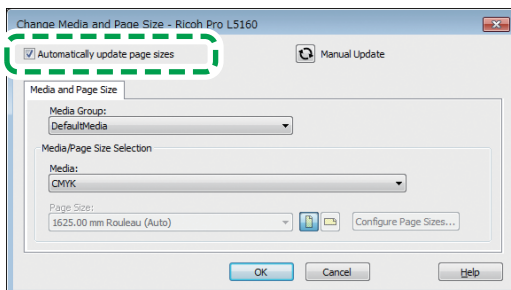
2

1. In the Information area, click the [Print Setup] tab.
2. Click the gear icon next to "Current Media and Page Size".



DWU813

3. Check "Automatically update page sizes", and then click [OK].



DWU812

### ↓ Note

- You can update the media width by clicking .

## Specifying SNMP Community Name

You can specify the SNMP community name.

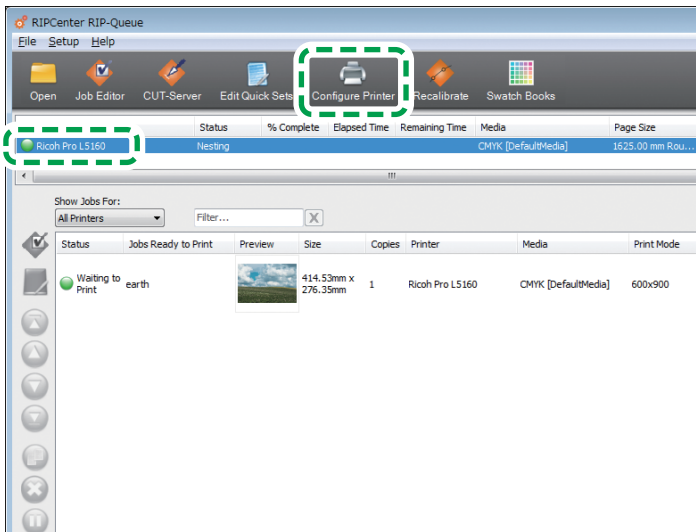
Normally, you do not need to change this setting. Only if this setting differs from the machine setting, adjust it to match the machine setting.

### Checking the machine setting

1. **Connect to the printer with the web browser and log in in administrator mode.**  
For details, see "Using Web Image Monitor", Operating Instructions.
2. **Open "SNMP Settings" in "SNMP".**
3. **Make a note of the SNMP community name.**

### Checking/specifying the RIPCenter/PosterShop community name

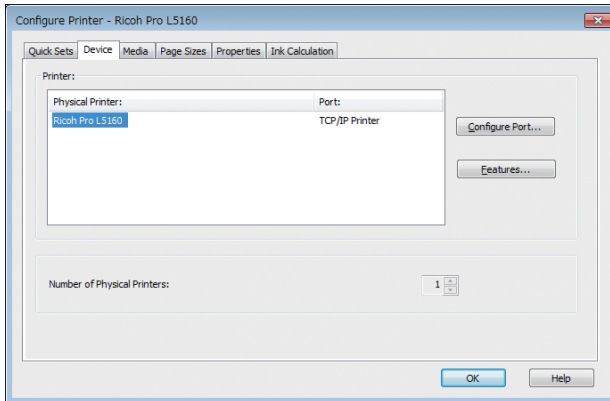
1. **Select the printer, and then click [Configure Printer].**



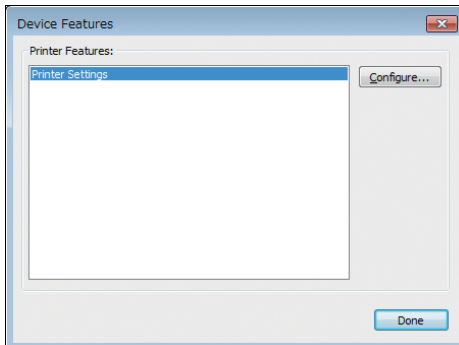
DWU814

2. **After the confirmation dialog box appears, click [Yes].**
3. **Click the [Device] tab.**

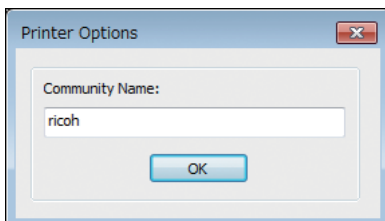
4. Select the printer, and then click [Features...].



5. Select "Printer Settings", and then click [Configure...].



6. Check the community name. If it differs from the SNMP community name on the printer, change it to match it with the machine setting.



7. Click [OK].

# Functions Usable with PosterShop

This section explains the functions usable with the optional PosterShop.

## 2

### Specifying Resolution

Specify the resolution for the media profile. You can apply the solution to the print job by using the media profile.

#### 1. Launch Media Manager, and then open the media profile edit menu (ICC Workflow).

The procedure varies depending on whether you create a new profile or edit an existing one.

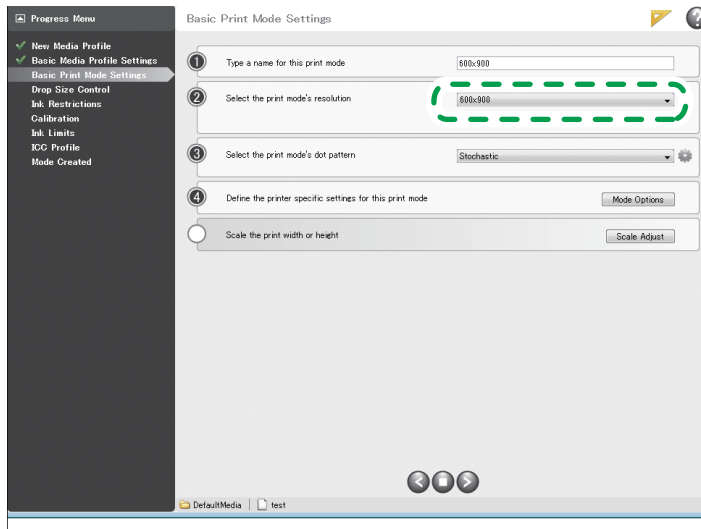
Creating a new profile

- [Create Profiles] → [Create a new Media Profile]

Editing an existing profile

- [Edit Profiles] → [Edit an existing Media Profile]
- [Media Library] → Select the media profile, and then click [Edit].

#### 2. In "Basic Print Mode Settings", click No. 2 [Select the print mode's resolution], and then specify the resolution.



DWU823

Selectable values are as follows.

- 600×450
- 600×600
- 600×900
- 600×1200

- 1200×1200

### ↓ Note

- The resolution applied to the print job appears in the job list. For details, see page 12 "Jobs Ready to Print Area/Buffered Jobs Area".

## Specifying Multilayer Printing

2

Specify the multilayer printing setting for the media profile. You can apply the multilayer printing to the print job by using the media profile.

### 1. Launch Media Manager, and then open the media profile edit menu (ICC Workflow).

The procedure varies depending on whether you create a new profile or edit an existing one.

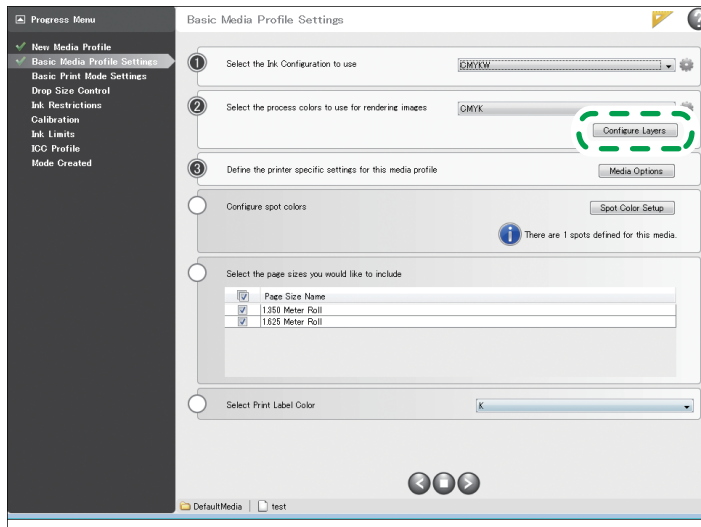
Creating a new profile

- [Create Profiles] → [Create a new Media Profile]

Editing an existing profile

- [Edit Profiles] → [Edit an existing Media Profile]
- [Media Library] → Select the media profile, and then click [Edit].

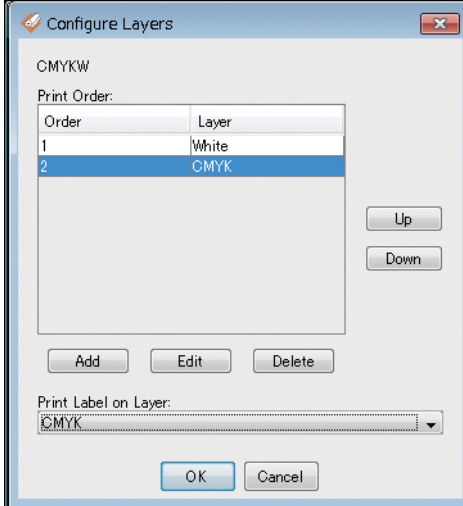
### 2. In "Basic Media Profile Settings", click No. 2 [Configure Layers].



DWU824

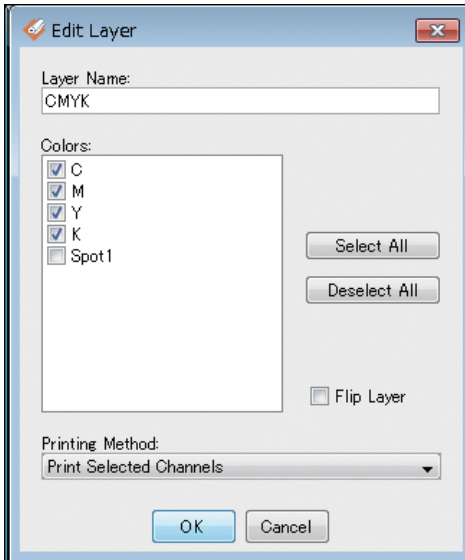
## Setting Menu

### Configure Layers



Items	Description
Print Order	Displays the layer of ink to be printed in ascending order. The layer directly on the media is 1, and the last number is the printed surface.
[Add]	Add a layer.
[Edit]	Edit the selected layer.
[Delete]	Delete the selected layer.
[Up]	Move the selected layer up.
[Down]	Move the selected layer down.

## Edit Layer



Items	Description
Layer Name	Specify the layer's name.
Colors	For the process color layer, check CMYK. For the spot color layer, check the corresponding spot color.
Printing Method	Select the layer printing method. <ul style="list-style-type: none"> <li>• Print Selected Channels: Print as is.</li> <li>• Fill Selected Channels: Print in solid fill.</li> <li>• Print Image. Fill Selected (Staggered Heads Only): Print process colors as is and spot colors in solid fill.</li> </ul>





# 3. Restrictions on Using RIPCenter/PosterShop

This section explains the notes on using RIPCenter/PosterShop.

## Restrictions on RIP-Queue

Overview	Details	Solution
[Modify Printer] does not operate.	Even if you right-click on the printer registered to RIP-Queue and select [Modify Printer] on the menu, this function does not operate.	You can open the same menu by selecting the gear icon on "Current Media and Page Size" in "Print Setup" in the Information area.
A Quick Sets setting has been applied to the print jobs registered to RIP-Queue, but some settings have not been applied.	Even if you right-click on the Jobs Ready to Print area and Buffered Jobs area and select "Apply Quick Set", the following settings are not applied. <ul style="list-style-type: none"> <li>• Sizing Rule: Magnification</li> <li>• Media: Print Options...</li> <li>• Media: Get Media and Page Size From Printer</li> </ul>	Perform "1" or "2". <ol style="list-style-type: none"> <li>1. On the [Open] menu, select the file again and add it as a new job. When you do this, select a Quick Sets setting on the [Open] screen.</li> <li>2. Manually specify the magnification, Printer Settings, Media Group, and Media Name settings for each print job.</li> </ol>
The same warning appears twice.	If you select [Print Setup] in the Information area → gear icon in "Placement" → "General", and then delete the "Time Based Start" or "Area Based Start" setting, the warning appears twice.	This does not affect the operation.
Cannot print 1,000 copies or more when printing files other than PDF.	Even if you select the [Print] tab on Job Editor → "Print Options" → "Copies" and select 1,000 or more copies, it changes to "999" in RIP-Queue.	Specify the number of copies within 999. To print 1,000 or more copies, print the PDF file.

Overview	Details	Solution
A warning message does not appear even if a file not supported by RIP-Queue is opened.	Even if an unsupported file is selected in [Open], a warning message does not appear.	The file will not be selected, so it does not cause any problem.  Note that a warning message appears if a file not supported by Job Editor is opened.
An ink coverage does not appear in "Job Properties". (The message "Unavailable" appears.)	If you right-click the print job → [Job Properties] → "Info" → "Ink Usage", the message "Unavailable" appears in "Ink Coverage".	Display the ink coverage in the job list by right-clicking on the job list title (example: Preview) and clicking "Ink Coverage".
When copying a copy (grandchild copying), ripping does not complete.	If you create a copy and try to copy that copy (grandchild copying), ripping stops halfway.	Do not perform grandchild copying.  Creating multiple copies does not cause problem.
A ripping error occurs when opening a GIF file.	If you try to open a GIF file by [Open], you cannot print the file due to a ripping error.	Use files other than GIF files.
When ripping a PCX/TGA file with ink composition including white ink, a color error occurs.	If you open a PCX/TGA file with ink composition including white ink, a color error occurs.	When using white ink, select a file format other than PCX/TGA.
Cannot uninstall an application from the ONYX product application list on the Windows start menu.	With Windows 10, you cannot uninstall an application from the application list on the start menu.	Uninstall the application from the "Apps & Features" menu on the Windows control panel.
It is possible to enter a value exceeding the precision beyond the set range of the decimal places.	In [File] → [General Settings] → "Display" → "Measurement Display" → "Precision", you can enter a value beyond the range of the effective values 1 to 8.	The printer does not operate correctly if you enter an ineffective value. Enter a value within the range of 1 to 8.
If entering a large number in the spin box, the application is terminated forcibly.	If entering a large number that exceeds 55 digits in the spin box, the application is terminated forcibly.	Do not enter a large number exceeding 55 digits in the spin box.

Overview	Details	Solution
Ripping an image with a very large height fails.	<p>Ripping fails in the following conditions.</p> <ul style="list-style-type: none"> <li>- Device configuration without white ink</li> <li>- Using PDF with spot colors.</li> <li>- Image with large height (Example)</li> </ul> <p>Resolution: 600×600, Height: Approx. 45,000 mm</p> <p>Resolution: 600×900, Height: Approx. 30,000 mm</p> <p>Resolution: 1,200×1,200, Height: Approx. 23,000 mm</p>	If falling under these conditions, take note of the image height.
Part of the folder location does not appear.	<p>If you specify a printer name using 35 or more characters via RIP-Queue, part of the folder location does not appear.</p> <p>This does not affect the folder name.</p>	Keep the printer name under 35 characters.
Part of the folder location does not appear.	<p>If you specify a printer name including a single-byte hyphen (-), the hyphen and the part of the folder location following that do not appear.</p>	Do not include the hyphen (-) in the printer name.
If printing a job with a very long name, the application is terminated forcibly.	<p>If printing a job with a very long file name exceeding 200 characters, the application may be terminated forcibly.</p>	Do not use a very long name for the files.
The "Status" reports do not match between RIP-Queue and Job Editor.	<p>The "Status" report in the Printer area of RIP-Queue and that on the [Print] tab of Job Editor do not match.</p>	<p>The data reported via RIP-Queue and Job Editor differs.</p> <p>RIP-Queue reports the printer status.</p> <p>Job Editor reports the connection status with RIP-Queue.</p>

## Restrictions on Job Editor

Overview	Details	Solution
Cannot print 1,000 copies or more when printing files other than PDF.	Even if you select the [Print] tab on Job Editor → "Print Options" → "Copies" and select 1,000 or more copies, it changes to "999" in RIP-Queue.	Specify the number of copies within 999. To print 1,000 or more copies, print the PDF file.
It is possible to enter a value exceeding the maximum limit of copies.	If you open the file and click the [Print] tab → "Print Options" → "Copies" and click the ▲ button, you can specify "10,000", exceeding the maximum limit of 9,999.	If actuality, instead of "10,000", the value is saved as "9,999".
The "Apply the settings from the most recently submitted job to the new job" function is not applied.	Even if you check "Apply the settings from the most recently submitted job to the new job" in the [Open] menu, it may not be applied.	Change the print job setting manually.
When using the "Apply the settings from the most recently submitted job to the new job" function, an incorrect value is applied.	If you check "Apply the settings from the most recently submitted job to the new job" in the [Open] menu and open the file, the following problems may occur. - "Media Group" is blank and cannot be specified. - "(Invalid)" appears after the media name and the selectable values are odd. - The print mode appears with "<>" and there is only one selectable choice.	Do not send the affected print job to RIP-Queue and restart Job Editor.

Overview	Details	Solution
When using the "Apply the settings from the most recently submitted job to the new job" function, the number of copies and magnification change incorrectly.	If you check "Apply the settings from the most recently submitted job to the new job" in the [Open] menu, open a file and display the [Open] menu again, the "Image" setting may have changed as follows.  Copies: 0  Magnification: Disabled (unchecked)  Width: Blank  Height: Blank	Change the settings manually.
Part of the source image information may not appear.	When you click the [Printer and Media] tab → "Source Image" → "Format", part of the source image information may not appear depending on the language and source image.	This does not affect the print job.
When sending print jobs to RIP-Queue, the "Print Info:" message appears.	When sending print jobs to RIP-Queue, the "Print Info:" message appears in "Status" on the [Print] tab on the Job Editor screen.	This does not affect the print job.
If entering a large number in the spin box, the application is terminated forcibly.	If entering a large number that exceeds 55 digits in the spin box, the application is terminated forcibly.	Do not enter a large number exceeding 55 digits in the spin box.
The "Status" reports do not match between RIP-Queue and Job Editor.	The "Status" report in the Printer area of RIP-Queue and that on the [Print] tab of Job Editor do not match.	The data reported via RIP-Queue and Job Editor differs.  RIP-Queue reports the printer status.  Job Editor reports the connection status with RIP-Queue.

## Restrictions on the Virtual Printer

3

Overview	Details	Solution
<p>There are multiple ways to specify the Quick Sets setting for the virtual printer and your specified setting may not be applied.</p>	<p>Specify the Quick Sets setting for the virtual printer as follows. Otherwise, the setting will not be applied.</p> <ol style="list-style-type: none"> <li>1. From Windows, open "Printer Properties" of the ONYX virtual printer.</li> <li>2. [General] → [Preferences] → [Layout] → [Advanced] → "Document Options" → "Printer Features" → "Quick Set"</li> </ol>	<p>Specify the Quick Sets settings for the virtual printer as shown on the left.</p>
<p>When opening a PDF with a spot color (white) via Microsoft Edge and printing it via the ONYX virtual printer, the spot color is not printed.</p>	<p>When opening a PDF with a spot color (white) via Microsoft Edge and printing it via the ONYX virtual printer, the spot color is negated.</p>	<p>Do not print via Microsoft Edge.</p>

# Restrictions on Media Manager

These restrictions are applied when using optional PosterShop.

Overview	Details	Solution
If colorimetry fails, Media Manager is terminated forcibly.	With "X-Rite i1 iSis", Media Manager is terminated forcibly if colorimetry fails.	<ul style="list-style-type: none"> <li>- Save the media profile before performing colorimetry.</li> <li>- If colorimetry fails with X-Rite i1 iSis, use another model.</li> </ul>
If switching to another menu while editing the profile, the dot pattern may change.	If you additionally select a dot pattern, move to the next menu, and then return to the dot pattern selection menu, a different dot pattern is applied.	Open the dot pattern selection menu and select the dot pattern again.





# 4. Appendix

---

## Trademarks

"ONYX," the ONYX logo and "ONYX PosterShop" are registered trademarks, and "ONYX RIPCenter" is trademark, of ONYX Graphics, Inc.

Intel Core is a trademark of Intel Corporation or its subsidiaries in the U.S. and/or other countries.

Microsoft and Windows are either registered trademarks or trademarks of Microsoft Corporation in the United States and/or other countries.

- The product names of Windows 7 are as follows:  
Microsoft® Windows® 7 Professional
- The product names of Windows 8.1 are as follows:  
Microsoft® Windows® 8.1 Pro
- The product names of Windows 10 are as follows:  
Microsoft® Windows® 10 Pro
- The proper name of Edge is Microsoft® Edge™.

Other product names used herein are for identification purposes only and might be trademarks of their respective companies. We disclaim any and all rights to those marks.

Microsoft product screen shots reprinted with permission from Microsoft Corporation.

---

MEMO



