

RICOH

RICOH PJ WUL6280/WXL6280/LU8000

Color Adjustment Tool User's Manual

Before using Color Adjustment Tool

For safe and correct use, be sure to read this user's manual before using this software.

Color Adjustment Tool is to adjust RGBCYM values of PJ WUL6280/WXL6280/LU8000. If you want to change the color of a projector, Color Adjustment Tool can help you to achieve this goal quickly.

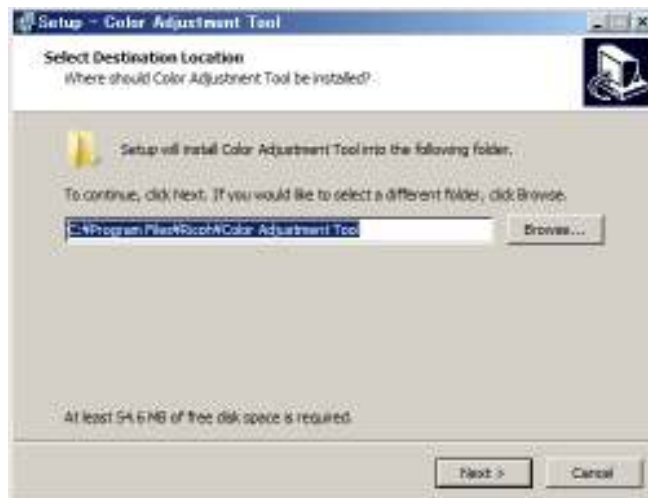
We have a same function on OSD of a projector. But in Color Adjustment Tool, it is more convenient for you to adjust. The better thing is you can carry this value setting to other projectors.

<System Requirements>

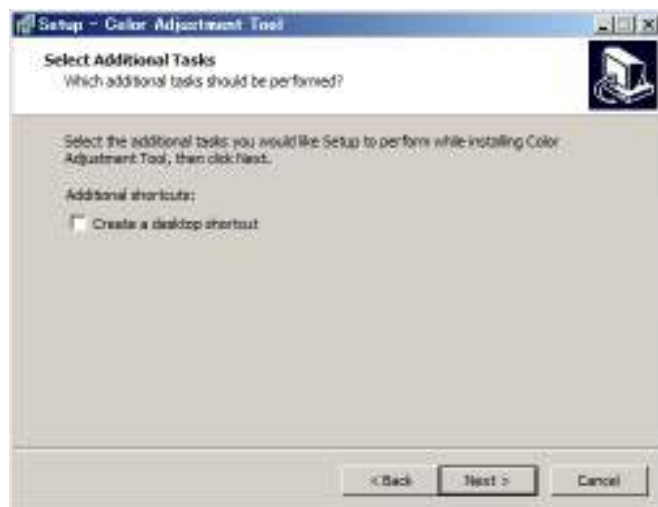
- Supported OS - Windows 8.1 /8 (64bit, 32bit), Windows 7 (64bit, 32bit)
- Processor - 1GHz or greater
- Memory - 2GB or greater

1. Install Color Adjustment Tool

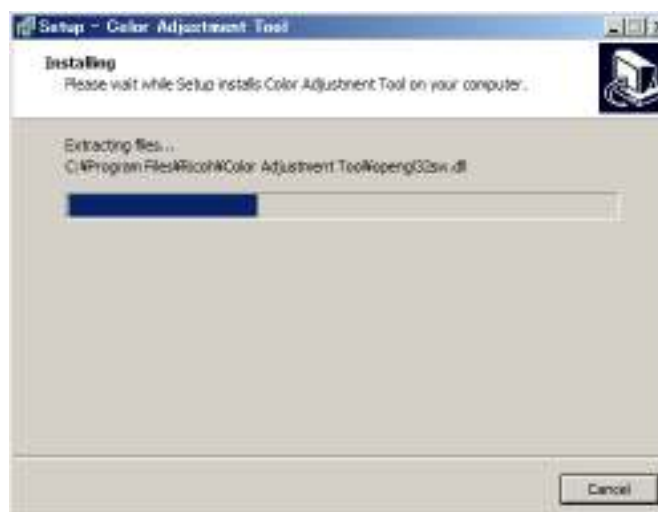
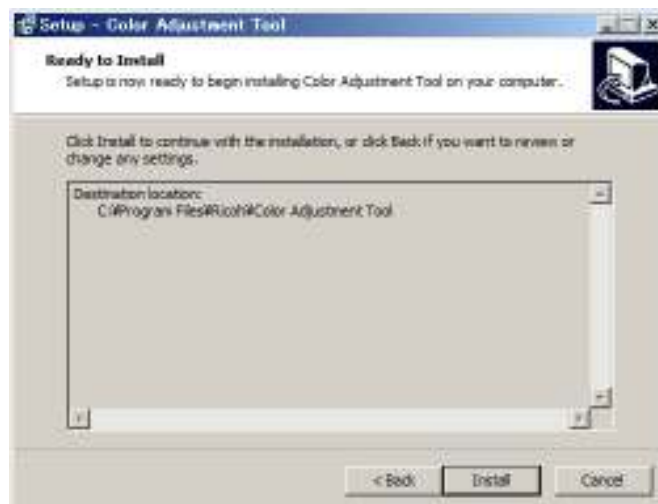
- (i). Download Color Adjustment Tool from our website in advance
- (ii). Double-click[Color Adjustment Tool Setup] and click[Next]



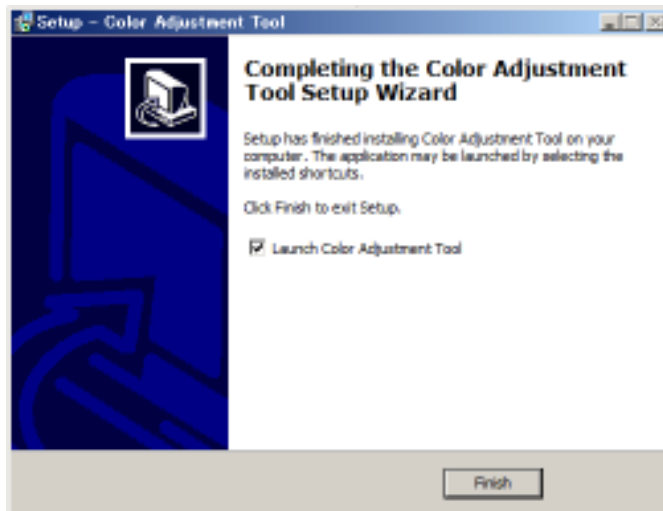
(iii). Click[Next]



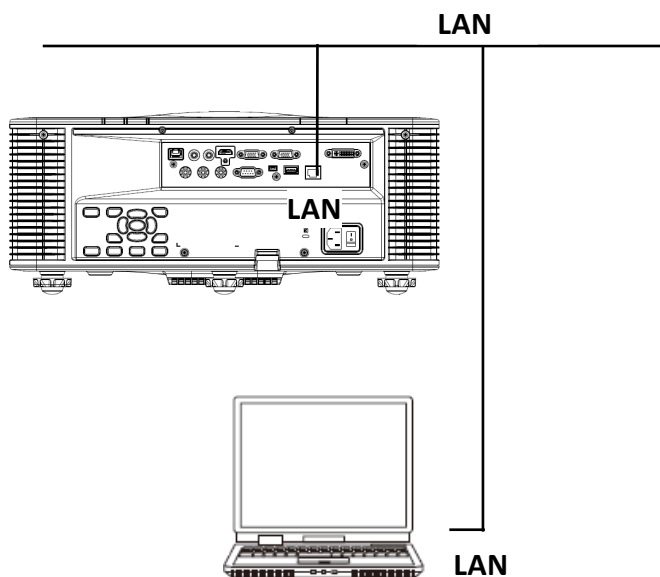
(iv). Click[Install]



(v). Click[Finish]



2. Hook up a PC to a projector

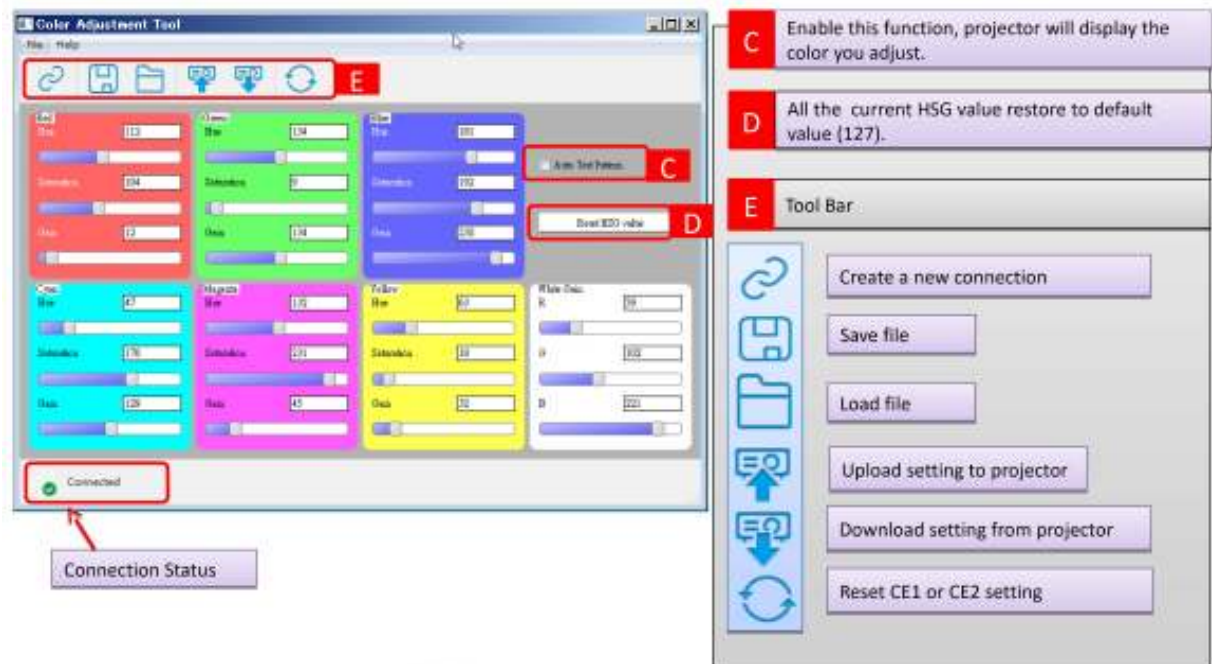


<Note>

- Confirm if each projectors are on the same network
- Use Cat5 (or grater) cable
- Enable to connect via RS232 with crossover cable

3. Setting Color Adjustment Tool

(i). Color Adjustment Overview



(ii). Set up Connection

Step 1: Connect RJ45 cable or RS232 cable to a projector.

Step 2: Install and Activate Color Adjustment Tool.

For Windows 8.1

Activate Color Adjustment Tool from [Apps] in the start screen

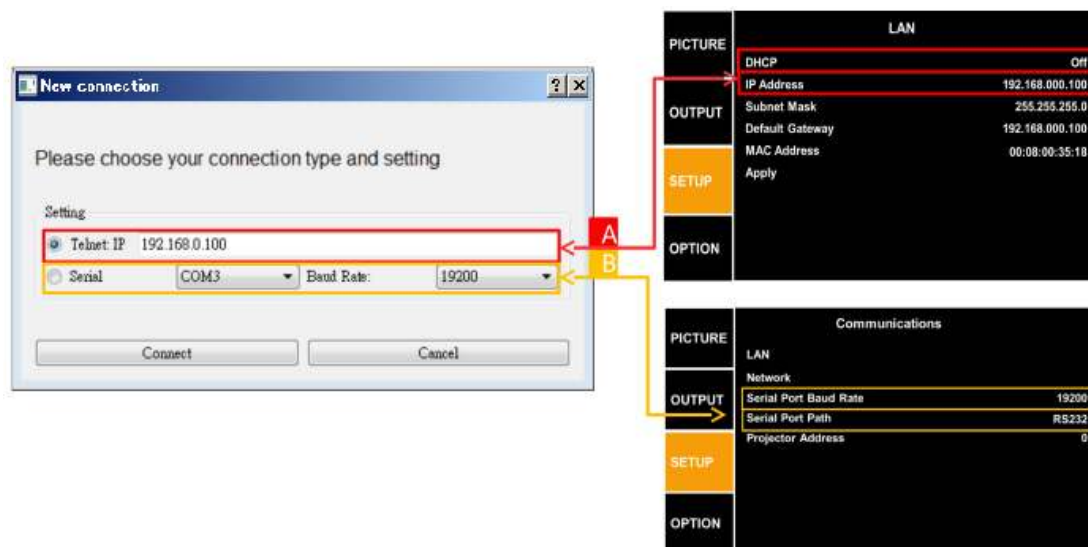
For Windows 8

Activate Color Adjustment Tool from [All apps] after right-clicking in the start screen

For Windows 7

Activate Color Adjustment Tool from [All programs] in the start menu

Step 3: Choose Serial or Telnet IP.



<Note>

- Set the IP address that you can see in the setup menu in the projector when you choose Telnet IP.
- Set Serial Port Path[RS232] that you can see in the setup menu in the projector and then set the same Baud Rate on the application screen as it in the setup menu in the projector when you choose Serial.
- For one projector, it only can accept single connection. DO NOT activate two packages of Color Adjustment Tool to connect to a projector.
- Turn off Auto Source function when we use Color Adjustment Tool in order to get best performance.

(iii). Adjust HSG value, upload and download



(a). Adjust and upload

Step 1: Start a connection.

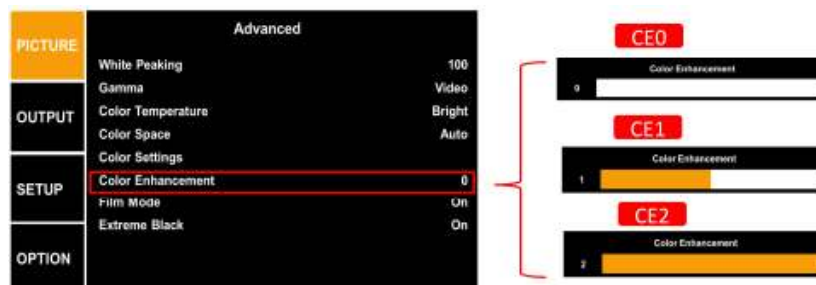
Step 2: User can enable auto test pattern. It shows the color pattern you are adjusting.

Step 3: Adjust values of RGBCYM according to your preference. We can use mouse to move sliders. We can also use keyboard to move the handle of slider. "Up" and "Right" key are to increment 1. "Down" and "Left" key are to decrement 1. "PgUp" key is to add 10. "PgDn" key is to minus 10.

Step 4: After you finished adjusting, you can upload HSG values to CE1 or CE2.

<Note>

- If you upload HSG values to CE1, you will see that Color Enhancement is "1" in Advanced menu in the projector
- If you upload HSG values to CE2, you will see that Color Enhancement is "2" in Advanced menu in the projector





- 1.CE0: Default HSG setting.
- 2.CE1:1st HSG setting
- 3.CE2:2nd HSG setting

(b). Adjust and download



Step 1: Start a connection.

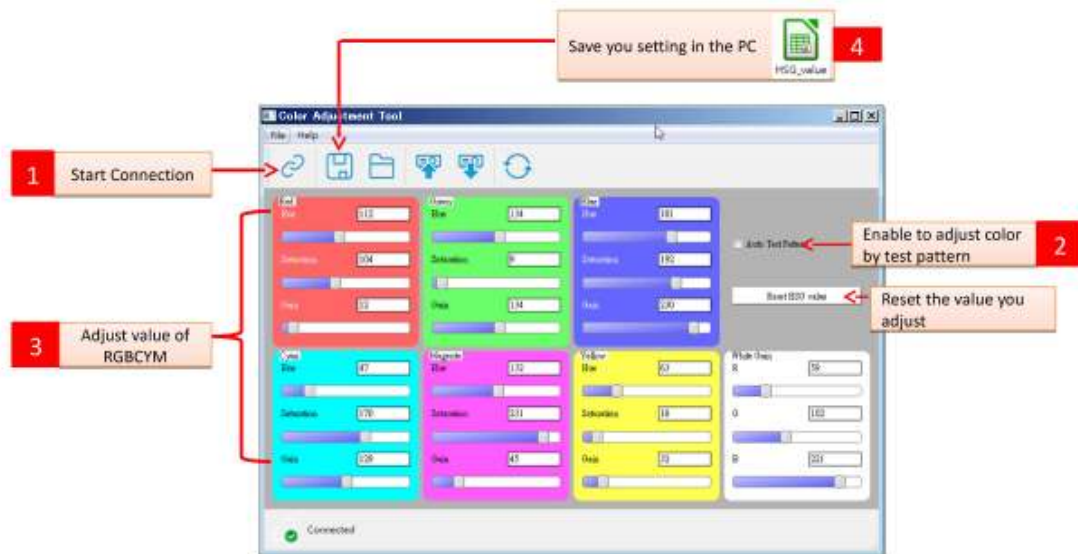
Step 2: User can click  to download CE1 or CE2 then adjust HSG values.

Click  if you want to reset CE1 and CE2.

Step 3: Adjust values of RGBCYM according to your preference.

Step 4: After you finished adjusting, you can upload HSG values to a projector (refer to "(a)") or save a file to a PC (refer to "(c)").

(c). Adjust and save



Step 1: Start a connection.

Step 2: User can use auto test pattern. It shows the color pattern you are adjusting.


Step 3: Adjust values of RGBCYM according to your preference.

Step 4: After you finished adjusting, you can save HSG values to a file on your PC.

(d). Adjust and load



Step 1: Start a connection.

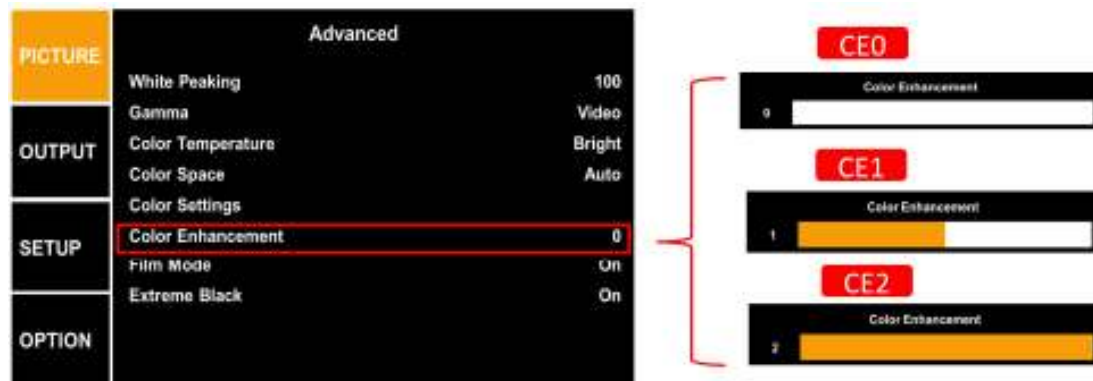
Step 2: Click  to load a file from your PC. It will sync HSG values with a projector automatically.

Step 3: Adjust values of RGBCYM according to your preference.

Step 4: After you finished adjusting, you can upload HSG values to a projector (refer to "(a)") or save a file to a PC (refer to "(c)").

4. Appendix

(i). Color Enhancement setting



- 1.CE0: Default HSG setting.
- 2.CE1:1st HSG setting
- 3.CE2:2nd HSG setting

In OSD of a projector, "Color Enhancement" setting can be set to CE0, CE1 and CE2. The HSG values of CE0 are all 127. When you save new setting to CE1 or CE2 through Color Adjustment Tool, the projector will set "Color Enhancement" to the option you saved.

(ii). Network configuration



Please use a RJ45 cable to hook up your PC to a projector. Follow the above step 1 to step 5 to set up. In Step 6, set IP address from 192.168.0.1 to 192.168.0.250. This address should be different from the projector IP. Usually, the default IP address of a projector is 192.168.0.100.