



VM Card

Operating Instructions Extended Feature Settings Web Reference

-
- 1 Introduction
 - 2 Screens
 - 3 Startup Setting
 - 4 Extended Feature Info
 - 5 Change Allocation
 - 6 Administrator Tools
 - 7 Appendix

TABLE OF CONTENTS

Notice.....	3
Important.....	3
How to Read This Manual.....	4
Symbols.....	4
Notes.....	4
About IP Address.....	4
1. Introduction	
What are Extended Features?.....	5
Types of Extended Features.....	5
This Manual.....	6
2. Screens	
Displaying the Operation Screen.....	7
Logging in as an Administrator.....	7
Web Image Monitor Operations Screens.....	9
Startup Setting Screen.....	9
Extended Feature Info Screen.....	11
Change Allocation Screen.....	13
Administrator Tools Screen.....	14
Other Screens.....	16
3. Startup Setting	
Starting and Stopping Extended Features.....	23
Starting Extended Features.....	23
Stopping Extended Features.....	25
Setting Priority.....	27
4. Extended Feature Info	
Displaying Extended Feature Information.....	29
5. Change Allocation	
Changing allocated function keys.....	31
6. Administrator Tools	
Setting Heap / Stack Size.....	35
7. Appendix	
Trademarks.....	37

INDEX.....	39
------------	----

Notice

Important

In no event will the company be liable for direct, indirect, special, incidental, or consequential damages as a result of handling or operating the machine.

How to Read This Manual

Symbols

This manual uses the following symbols:

Important

Indicates points to pay attention to when using the machine, and explanations of likely causes of paper misfeeds, damage to originals, or loss of data. Be sure to read these explanations.

Note

Indicates supplementary explanations of the machine's functions, and instructions on resolving user errors.

Reference

This symbol is located at the end of sections. It indicates where you can find further relevant information.

[]

Indicates the names of keys on the machine's display or control panels.

Notes

Contents of this manual are subject to change without prior notice.

Some illustrations in this manual might be slightly different from the machine.

Certain options might not be available in some countries. For details, please contact your local dealer.

Depending on which country you are in, certain units may be optional. For details, please contact your local dealer.

About IP Address

In this manual, "IP address" covers both IPv4 and IPv6 environments. Read the instructions that are relevant to the environment you are using.

1. Introduction

What are Extended Features?

1

"Extended features" are features (applications) that enable you use this device more easily.
The extended features installed on a device differ according to users' requirements. For details about which extended features are installed on your device, ask the device manager.

Types of Extended Features

Extended features are classified into two types, Type-J ^{*1}, and Type-C ^{*2}, depending on the development environment.

Type-J ^{*1} extended features

These are features (applications) that are developed using Java.

Type-C ^{*2} extended features

These are features (applications) that are developed using C language.

You can confirm which type of extended features are in use from the "Type" column of the list displayed in the operation screen of the Web Image Monitor.

Extended Feature Info							
Back							
Total Applications: 4							
Extended Feature Name	Priority	Type	Status	Description	Version	Allocated to	Startup Location
ELP Ver.	1	J	Suspend	for Secure Print.	1.3.0.0	---	SD Card Slot 1
Embedded Ver.	1	J	Suspend		1.3.0.0	---	SD Card Slot 1
JavaTM Platform	1	C	Starting Up	IPR008 Extended Feature(JavaTM Platform)	7.00	Other Functions	SD Card Slot 1
Browser	1	C	Starting Up	Web browser	1.79.02	Other Functions	Device HDD
Back							

For details, see "Web Image Monitor Operations Screens".

^{*1} Embedded Software Architecture Application Java language version

^{*2} Embedded Software Architecture Application C language version

Reference

- p.9 "Web Image Monitor Operations Screens"

This Manual

1

This manual explains the [Startup Setting], [Extended Feature Info], [Change Allocation], and [Administrator Tools] regarding extended features installed in your devices.

If operating methods differ according to the type of extended feature, separate descriptions are given.

Note

- The [Install], [Uninstall], [Additional Program Startup Setting], [Install Additional Program], [Uninstall Additional Program], [Copy Extended Features], and [Copy Card Save Data] of the Extended Feature Settings are not used and are therefore not explained in this manual. For information about these settings, consult your nearest sales or service representative.
- Confirm general extended feature operations with the administrator.
- Refer to Extended Feature Settings Device Reference for use and operation of the device operating sections.
- Depending on which device you are using, it may not be possible to implement operations from the device operating section. In such cases, perform operations using Web Image Monitor.

Reference

- p.5 "Types of Extended Features"

2. Screens

Displaying the Operation Screen

Use the [Configuration] menu of the Web Image Monitor to display the operation screen.

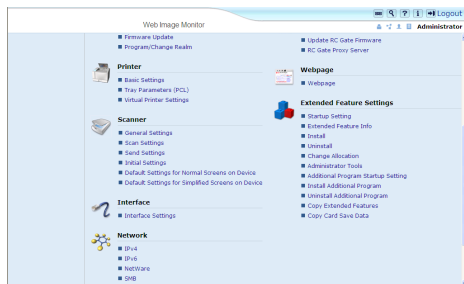
1. **Activate the web browser.**
2. **In the address bar, enter http:// + (IP address of device whose status you want to display) and press Enter key of the keyboard.**

The initial screen of the Web Image Monitor appears.

3. **Click [Configuration] in the menu on the left side of the Web Image Monitor screen.**

The configuration menu is displayed on the right side of the screen.

4. **"Extended Feature Settings", click the items you want to use.**



Note

- For details about the settings you must make to use Web Image Monitor, see the Network and System Settings Reference or Software Guide.
- To set [Startup Setting], [Change Allocation], or [Administrator Tools], you must login as an administrator. For details, see "Logging in as an Administrator".

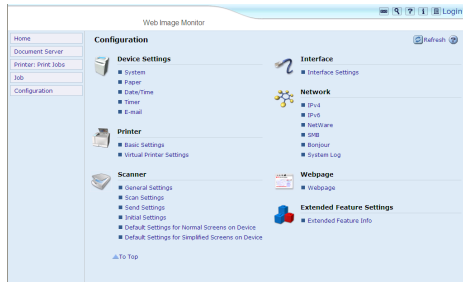
Reference

- p.7 "Logging in as an Administrator"

Logging in as an Administrator

To set [Startup Setting], [Change Allocation], or [Administrator Tools], you must login as an administrator. Enter a login user name and login password, and then log in.

1. Click [Login] in the upper right-hand corner of the Web Image Monitor initial screen.



2. Enter a login user name and password, and then click [Login].

↓ Note

- For details about the login user name and password, consult your administrator.
- You do not have to log in as an administrator to use Extended Feature Info only.

Web Image Monitor Operations Screens

The following explanation covers [Startup Setting], [Extended Feature Info], [Change Allocation], and [Administrator Tools] screen items.

Note

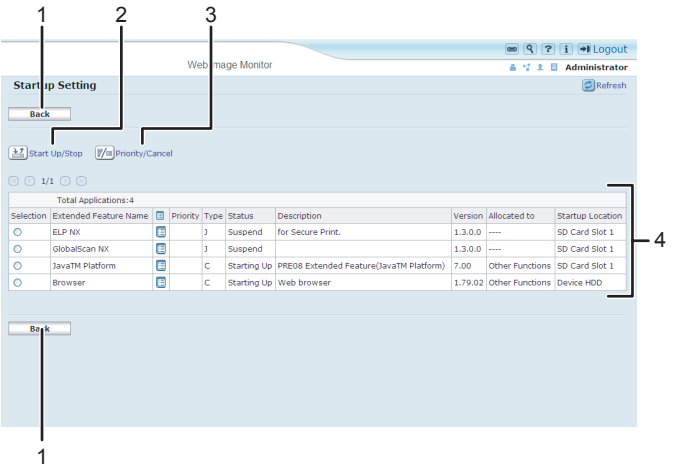
- The [Install], [Uninstall], [Additional Program Startup Setting], [Install Additional Program], [Uninstall Additional Program], [Copy Extended Features], and [Copy Card Save Data] screens are unavailable.

2

Startup Setting Screen

This section explains the various items on the Startup Setting screen.

For details about operations you can perform using this screen, see "Startup Setting".



BXX001

1. **[Back]**
Click this to return to the [Configuration] menu of the Web Image Monitor.
2. **[Start Up/Stop]**
Click this to set the selected extended feature to either "Starting Up" or "Stop".
3. **[Priority/Cancel]**
Click this button to set the "Priority" of the selected Type-J extended feature, or cancel the "Priority" setting. For details, see "Setting Priority".
4. **Extended feature list**
Displays a list of installed extended features.

Selection

- Click the radio button of the extended feature you want to set to "Starting Up" or "Stop". Click [Start Up/Stop] after selecting.
- Click the radio button of the Type-J extended feature to set or whose "Priority" setting you want to cancel. Click [Priority/Cancel] after selecting.

Extended Feature Name

Displays the names of extended features.

Properties

Displays an information screen for the extended feature, which allows you to check its [Properties] icon. For details, see "Extended Feature Info".

Priority

If multiple Type-J ^{*1} extended features are installed, they are displayed according to "Priority".

Type

Displays the types of extended features. For details, see "Types of Extended Features".

Status

Displays the status of extended features.

- Starting Up
Extended features are activated.
- Stop
Extended features are deactivated.
- Suspend
Only Type-J ^{*1} extended features are displayed.
Extended features are activated but are in standby status. You must reboot before you can use these features.
- Waiting
Only Type-C ^{*2} extended features are displayed.
Extended features are activated once the device is rebooted.
- Ending
Only Type-C ^{*2} extended features are displayed.
Extended features are shut down once the device is rebooted.

Description

Displays brief summaries of extended features.

Version

Displays the versions of extended features.

Allocated to

Displays the name of the function key allocated to the extended feature.

Startup Location

Displays the locations where extended features are installed.

*1 Embedded Software Architecture Application Java language version

*2 Embedded Software Architecture Application C language version

Note

- To set Startup Setting, you must login as an administrator. For details, see "Logging in as an Administrator".

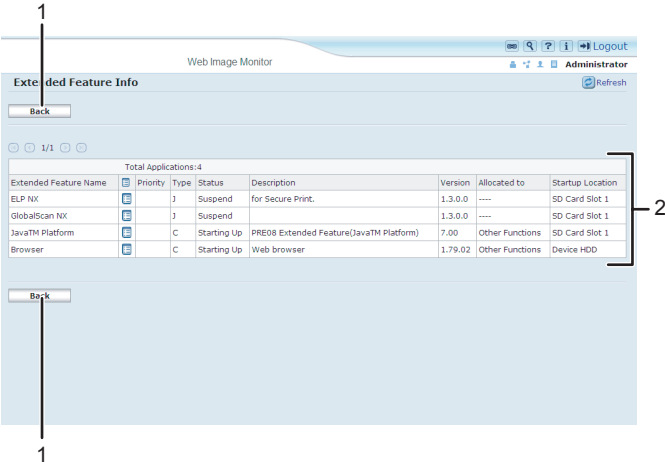
Reference

- p.23 "Startup Setting"
- p.27 "Setting Priority"
- p.29 "Extended Feature Info"
- p.5 "Types of Extended Features"
- p.7 "Logging in as an Administrator"

Extended Feature Info Screen

This section explains the various items on the Extended Feature Info screen.

For details about operations you can perform using this screen, see "Extended Feature Info".



BXX002

1. [Back]

Click this to return to [Configuration] menu of the Web Image Monitor.

2. Extended feature list

Displays a list of installed extended features.

Extended Feature Name

Displays the names of extended features.

Properties

Displays the extended feature information screen, allowing you check the [Properties] icon about the extended features. For details, see "Extended Feature Info".

Priority

If multiple Type-J ^{*1} extended features are installed, the extended feature displayed "Priority" is prioritized.

Type

Displays the types of extended features. For details, see "Types of Extended Features".

Status

Displays the status of extended features.

- Starting Up
Extended features are activated.
- Stop
Extended features are deactivated.
- Suspend
Only Type-J ^{*1} extended features are displayed.
Extended features are activated but are in standby status. Use of these features requires rebooting.
- Waiting
Only Type-C ^{*2} extended features are displayed.
Extended features are activated once the device is rebooted.
- Ending
Only Type-C ^{*2} extended features are displayed.
Extended features are shut down once the device is rebooted.

Description

Displays brief summaries of the extended features.

Version

Displays the versions of extended features.

Allocated to

The name of function key allocated to extended features are displayed.

Startup Location

Displays the locations where extended features are installed.

^{*1} Embedded Software Architecture Application Java language version

^{*2} Embedded Software Architecture Application C language version

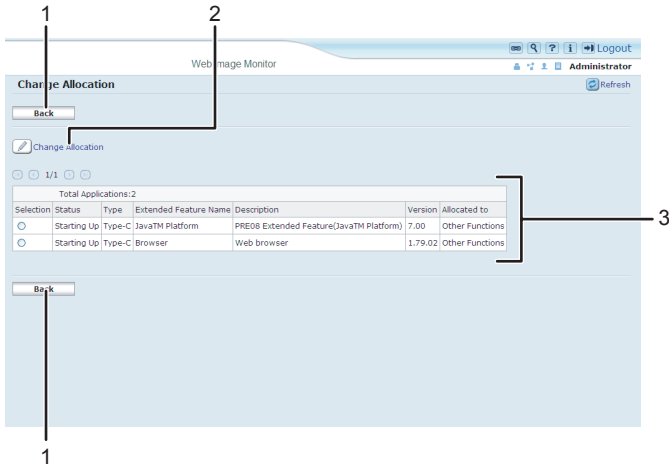
Reference

- p.29 "Extended Feature Info"
- p.5 "Types of Extended Features"

Change Allocation Screen

This section explains the various Change Allocation screen items.

For details about operations you can perform using this screen, see "Change Allocation".



BXX003

1. [Back]

Click this to return to [Configuration] menu of the Web Image Monitor.

2. [Change Allocation]

Click this to change the function key that is allocated.

3. Extended feature list

Displays a list of installed extended features.

Selection

Click the radio button of the extended feature to change the function key that is allocated. Click [Change Allocation] after selecting.

Status

Displays the status of extended features.

- Starting Up
Extended features are activated.
- Stop
Extended features are deactivated.
- Suspend
Only Type-J ^{*1} extended features are displayed.
Extended features are activated but are in standby status. Use of these features requires rebooting.
- Waiting
Only Type-C ^{*2} extended features are displayed.
Extended features are activated once the device is rebooted.

- Ending
Only Type-C ^{*2} extended features are displayed.
Extended features are shut down once the device is rebooted.

Type

Displays the types of extended features. For details, see "Types of Extended Features".

Extended Feature Name

Displays the names of extended features.

Description

Displays brief summaries of the extended features.

Version

Displays the versions of extended features.

Allocated to

Displays the name of function key that is allocated the extended feature.

*1 Embedded Software Architecture Application Java language version

*2 Embedded Software Architecture Application C language version

Note

- To set [Change Allocation], you must login as an administrator. For details, see "Logging in as an Administrator".

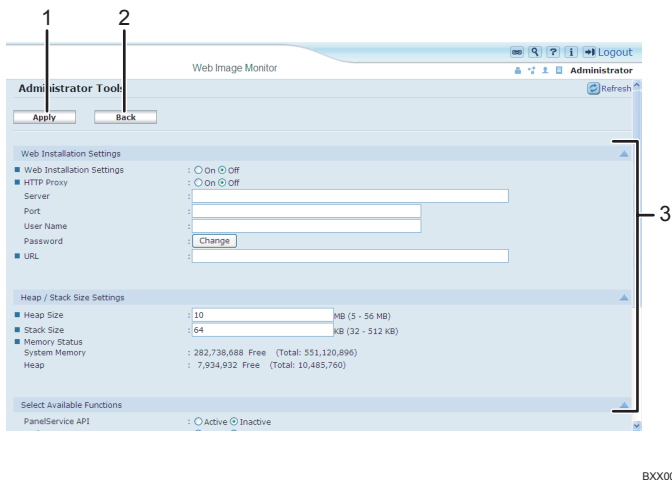
Reference

- p.31 "Change Allocation"
- p.5 "Types of Extended Features"
- p.7 "Logging in as an Administrator"

Administrator Tools Screen

This section explains the various items on the Administrator Tools screen.

For details about operations you can perform using this screen, see "Administrator Tools".



BXX004

1. [Apply]

Click this to apply changes made to settings.

2. [Back]

Click this to return to the [Configuration] menu of Web Image Monitor.

3. Settings list

Displays a list of settings.

- Web Installation Settings
Specify installation of extended features through the network.
- Heap / Stack Size Settings
Specify the heap and stack size necessary for extended features.
- Select Available Functions
Specify enable/disable for JavaTM Platform functions from the list.
- Web Service Settings
Configure the network-related settings.

↓ Note

- To set [Administrator Tools], you must login as an administrator. For details, see "Logging in as an Administrator".
- You can specify Heap / Stack Size Settings only.

📖 Reference

- p.35 "Administrator Tools"
- p.7 "Logging in as an Administrator"

Other Screens

The following explanation covers [Install], [Uninstall], [Additional Program Startup Setting], [Install Additional Program], and [Uninstall Additional Program] screen items.

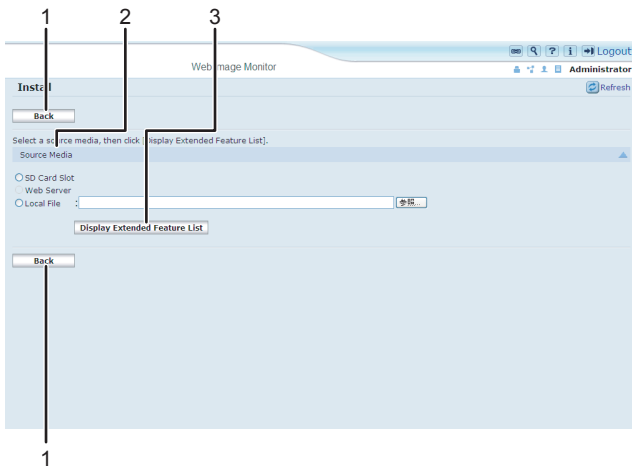
Note

- The [Install], [Uninstall], [Additional Program Startup Setting], [Install Additional Program], [Uninstall Additional Program], [Copy Extended Features], and [Copy Card Save Data] screens are unavailable.
- For information about these settings, consult your nearest sales or service representative.

Install Screen

This section explains the various items on the Install screen.

This screen allows you to install extended features.



BXX005

1. [Back]

Click this to return to [Configuration] menu of the Web Image Monitor.

2. Source Media

Select the storage media to use for performing installation of the extended features.

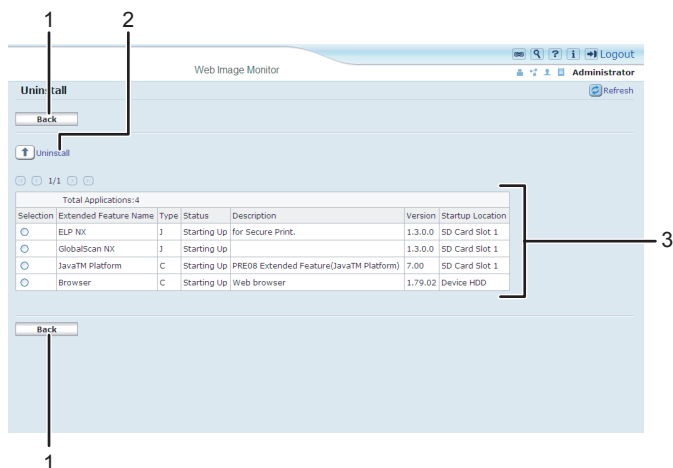
3. [Display Extended Feature List]

If you click [Display Extended Feature List], a list of the installable extended features stored in the source media (selected in Source Media) will appear.

Uninstall Screen

This section explains the various items on the Uninstall screen.

This screen allows you to uninstall extended features.



BXX006

1. [Back]

[Click this to return to \[Configuration\] menu of the Web Image Monitor.](#)

2. [Uninstall]

If you click [Uninstall], the extended features selected in the Extended Features list will be uninstalled.

3. Extended feature list

Displays a list of installed extended features.

Selection

Click the radio button(s) of the extended feature that you want to uninstall, and then click [Uninstall] to begin the uninstall process.

Extended Feature Name

Displays the names of extended features.

Type

Displays the types of extended features. For details, see "Types of Extended Features".

Status

Displays the status of extended features.

- Starting Up
Extended features are activated.
- Stop
Extended features are deactivated.
- Suspend
Only Type-J^{*1} extended features are displayed.
Extended features are activated but are in standby status. You must reboot before you can use these features.
- Waiting

Only Type-C^{*2} extended features are displayed.

Extended features are activated once the device is rebooted.

- Ending

Only Type-C^{*2} extended features are displayed.

Extended features are shut down once the device is rebooted.

^{*1} Embedded Software Architecture Application Java language version

^{*2} Embedded Software Architecture Application C language version

Description

Displays brief summaries of the extended features.

Version

Displays the versions of extended features.

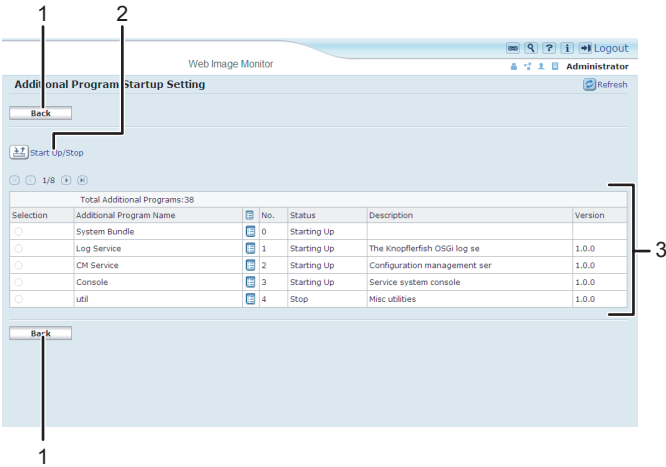
Startup Location

Displays the locations where extended features are installed.

Additional Program Startup Setting Screen

This section explains the various items on the Additional Program Startup Setting screen.

This screen allows you to start and stop installed additional programs.



BXX007

1. [Back]

Click this to return to the [Configuration] menu of the Web Image Monitor.

2. [Start Up/Stop]

Click this to set the selected additional program to either "Starting Up" or "Stop".

3. Additional program list

Displays a list of installed additional program.

Selection

Click the radio button of the additional program you want to set to "Starting Up" or "Stop". Click [Start Up/Stop] after selecting.

Additional Program Name

Displays the names of additional program.

Properties

Displays an information screen for the additional program, which allows you to check its [Properties] icon.

No.

Displays the ID of each additional program that is installed.

Status

Displays the status of additional program.

- Starting Up

Additional program are activated.

- Stop

Additional program are deactivated.

- Suspend

Additional program are activated but are in standby status. You must reboot before you can use these features.

Description

Displays brief summaries of additional program.

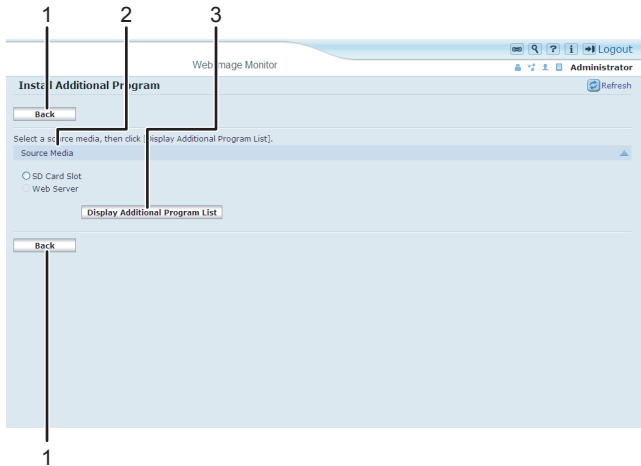
Version

Displays the versions of additional program.

Install Additional Program Screen

This section explains the various items on the Install Additional Program screen.

This screen allows you to install additional program.



BXX008

1. [Back]

Click this to return to [Configuration] menu of the Web Image Monitor.

2. Source Media

Select the storage media to use for performing installation of the additional program.

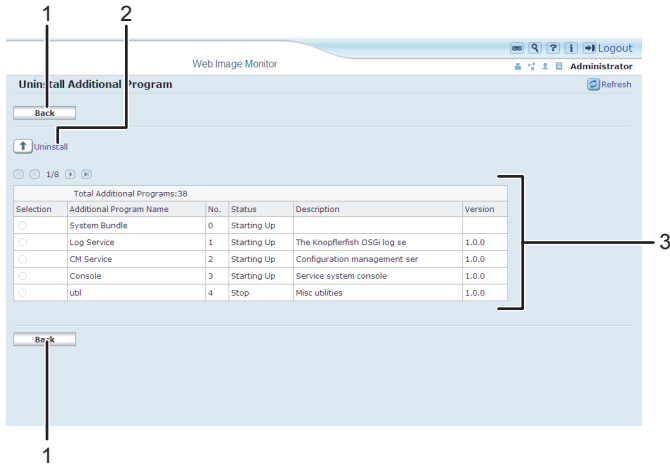
3. [Display Additional Program List]

If you click [Display Additional Program List], a list of the installable additional programs stored in the source media (selected in Source Media) will appear.

Uninstall Additional Program Screen

This section explains the various items on the Uninstall Additional Program screen.

This screen allows you to uninstall additional program.



BXX009

1. [Back]

Click this to return to [Configuration] menu of the Web Image Monitor.

2. [Uninstall]

If you click [Uninstall], the extended features selected in the additional programs list will be uninstalled.

3. Additional program list

Displays the status of additional program.

Selection

Click the radio button(s) of the additional program that you want to uninstall, and then click [Uninstall] to begin the uninstall process.

Additional Program Name

Displays the names of additional program.

No.

Displays the ID of each additional program that is installed.

Status

Displays the status of additional program.

- Starting Up

Additional program are activated.

- Stop

Additional program are deactivated.

- Suspend

Additional program are activated but are in standby status. You must reboot before you can use these features.

Description

Displays brief summaries of the additional program.

Version

Displays the versions of additional program.

3. Startup Setting

This chapter explains operations you can perform using the Startup Setting screen of the Web Image Monitor.

Starting and Stopping Extended Features

For details about items on the Startup Setting screen, see "Startup Setting Screen".

Note

- To set [Startup Setting], you must login as an administrator. For details, see "Logging in as an Administrator".

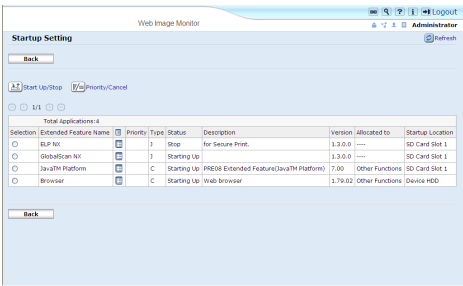
Reference

- p.9 "Startup Setting Screen"
- p.7 "Logging in as an Administrator"

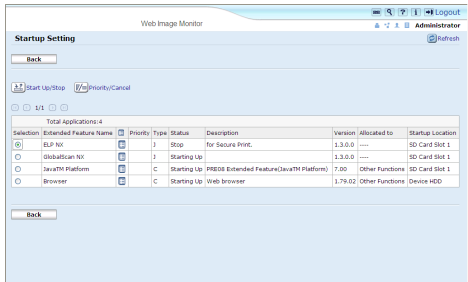
3

Starting Extended Features

1. Display the configuration menu screen on Web Image Monitor.
2. In "Extended Feature Settings", click [Startup Setting].
A list of installed extended features appears.
3. Select the extended features you want to start, from those whose status is "Stop", "Suspend", or "Ending". Select the radio button at the "Selection" in the list.



4. Click [Start Up/Stop].



Depending on the type and status of the extended features you select, the machine responds as follows:

Type-J ^{*1} extended features

- If "Suspend" is displayed:
"Status" changes to "Stop".
If you click [Start Up/Stop] again, "Status" changes to "Starting Up". The extended features start and become usable.
- If "Stop" is displayed:
"Status" changes to "Starting Up". The extended features start and become usable.

Type-C ^{*2} extended features

- If "Ending" is displayed:
"Status" changes to "Starting Up". The extended features start and become usable.
- If "Stop" is displayed:
"Status" changes to "Waiting".
After rebooting the device, "Status" changes to "Starting Up". The extended features start and become usable.
If you click [Start Up/Stop] again without rebooting, "Status" changes back to "Stop".

^{*1} Embedded Software Architecture Application Java language version

^{*2} Embedded Software Architecture Application C language version

5. Click [Back].

Note

- If "Waiting" is displayed, "Status" changes to "Starting Up" after rebooting the device. The extended features start and become usable.

Reference

- p.7 "Displaying the Operation Screen"

Stopping Extended Features

Normally it is not necessary to stop extended features.

Extended features that are required for communication with the server may stop if the server is deactivated.

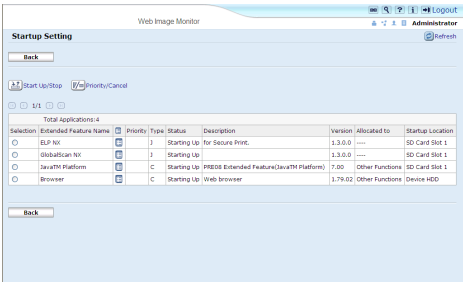
1. Display the configuration menu screen on Web Image Monitor.

2. In "Extended Feature Settings", click [Startup Setting].

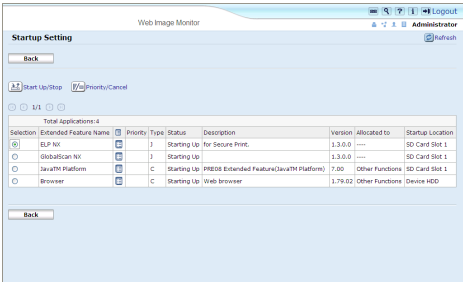
A list of installed extended features is displayed.

3. Select the extended features you want to start, from those whose status is "Starting Up", "Suspend", or "Waiting". Select the radio button at the "Selection" in the list.

3



4. Click [Start Up/Stop].



Depending on the type and status of the extended features you select, the machine responds as follows:

Type-J ^{*1} extended features

- If "Suspend" is displayed:
"Status" changes to "Stop". The extended features stop and become unusable.
- If "Starting Up" is displayed:
"Status" changes to "Stop". The extended features stop and become unusable.

Type-C ^{*2} extended features

- If "Waiting" is displayed:
"Status" changes to "Stop". The extended features stop and become unusable.
- If "Starting Up" is displayed:

"Status" changes to "Ending".

After rebooting the device, "Status" changes to "Stop". The extended features stop and become unusable.

If you click [Start Up/Stop] again without rebooting, "Status" changes back to "Starting Up".

*¹ Embedded Software Architecture Application Java language version

*² Embedded Software Architecture Application C language version

3

5. Click [Back].

Note

- If "Ending" is displayed, "Status" changes to "Stop" after rebooting the device. The extended features stop and become unusable.

Reference

- p.7 "Displaying the Operation Screen"

Setting Priority

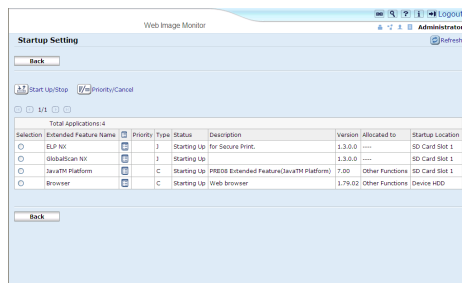
You can set priority for Type-J extended features only.

If multiple Type-J extended features are installed, you can specify their activation priority. For details, refer to Extended Feature Settings Device Reference.

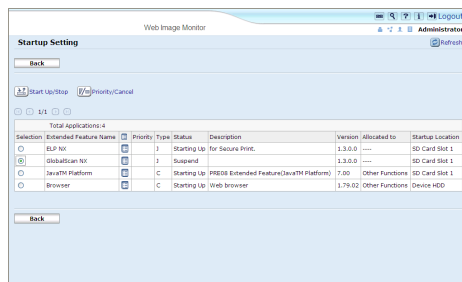
1. Display the configuration menu screen on Web Image Monitor.
2. In "Extended Feature Settings", click [Startup Setting].

A list of installed extended features appears.

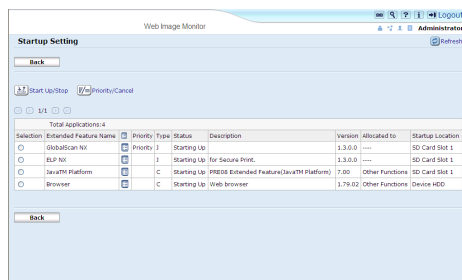
3. Select the Type-J extended features you want to priority activate. Select the radio button at the "Selection" in the list.



4. Click [Priority/Cancel].



"Priority" is displayed at the "Priority" for the selected Type-J extended feature in the list.



Note

- To cancel "Priority", select a Type-J extended feature that is set to "Priority", and then click [Priority/Cancel].

Reference

- p.7 "Displaying the Operation Screen"

4. Extended Feature Info

This chapter explains operations you can perform using the Extended Feature Info screen of the Web Image Monitor.

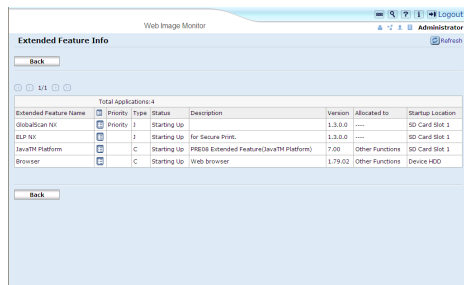
Displaying Extended Feature Information

1. Display the configuration menu screen on Web Image Monitor.
2. In the "Extended Feature Settings", click the [Extended Feature Info].

A list of installed extended features appears.

For details about items on the Extended Feature Info screen, see "Extended Feature Info Screen".

3. Click the [Properties] icon of the extended feature whose details you want to display.



4. Check the information, and then click [Back].



5. Click [Back].

Reference

- p.11 "Extended Feature Info Screen"
- p.7 "Displaying the Operation Screen"

5. Change Allocation

This chapter explains operations you can perform using the Change Allocation screen of the Web Image Monitor.

Changing allocated function keys

You can access extended features by pressing the function keys allocated to them. Use the following procedure to change the extended features allocated to function keys.

Depending on the type of extended features, allocation varies as follows:

Type-J ^{*1} extended features

One function key is allocated to Type-J ^{*1} extended features. Even if multiple Type-J ^{*1} extended features are installed, you cannot allocate function keys to them individually.

If multiple Type-J ^{*1} extended features are installed, you can specify their activation priority. For details, see "Setting Priority".

Type-C ^{*2} extended features

If multiple Type-C ^{*2} extended features are installed, you can allocate a function key to each.

^{*1} Embedded Software Architecture Application Java language version

^{*2} Embedded Software Architecture Application C language version

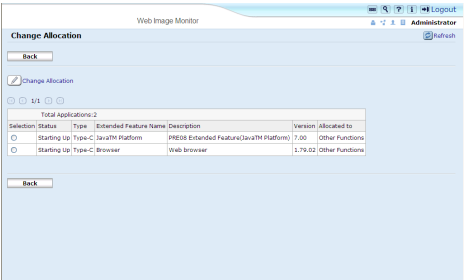
1. Display the configuration menu screen on Web Image Monitor.

2. In "Extended Feature Settings", click [Change Allocation].

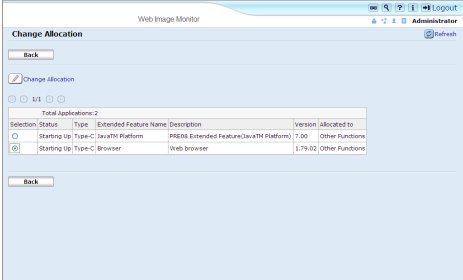
Currently allocated function keys are displayed to the right of the list, under "Allocated to".

For details about items on the Change Allocation screen, see "Change Allocation Screen".

3. Select the extended feature whose allocated function key you want to change. Select the radio button under "Selection".

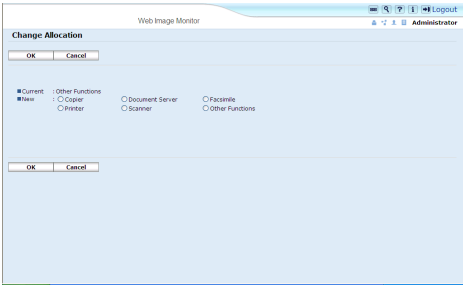


4. Click [Change Allocation].

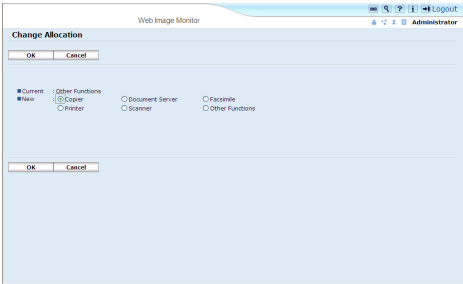


The screen for changing function key allocations appears.

5. Select the radio button of the function key you want to allocate from the "New :" items.



6. Click [OK].

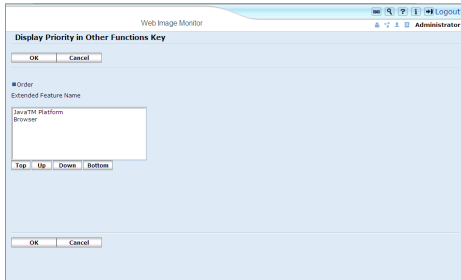


If you click Cancel, the Change Allocation screen returns and changes made to function key allocations are not applied.

If the newly allocated function key is the [Other Functions] key and other extended features are already allocated to it, a screen for changing their order appears. Proceed to step 7.

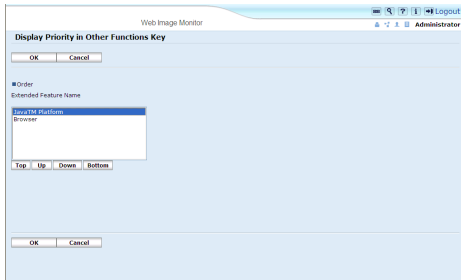
If the newly allocated function key is not the [Other Functions] key, changes made to the function key allocation are applied and the Change Allocation screen returns. Proceed to step 9.

- Click and highlight the extended feature whose order you want to change, and then move it by clicking [Top], [Up], [Down], or [Bottom].



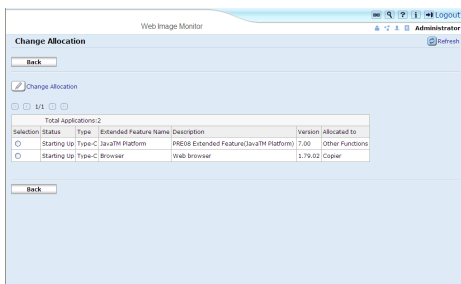
The order set here is displayed on the Other Functions screen that appears when you switch between extended features. For details, refer to Extended Feature Settings Device Reference.

- Click [OK].



The Change Allocation screen returns.

- Confirm that the changed allocation is displayed under "Allocated to", and then click [Back].



Note

- To set [Change Allocation], you must login as an administrator. For details, see "Logging in as an Administrator".
- If the device has [Registered Program] key on its operation panel, you can allocate extended features to them.
- If multiple extended features are installed, use the [Registered Program] key for different types of extended features.

- You cannot select extended features that do not require allocated function keys or cannot have function keys allocated to them.
- The number and names of the function keys differ according to the devices being used.
- Changes to allocations are applied after you reboot (turn off the machine's main power switch and then turn it back on).

Reference

- p.13 "Change Allocation Screen"
- p.7 "Logging in as an Administrator"
- p.27 "Setting Priority"
- p.7 "Displaying the Operation Screen"

6. Administrator Tools

This chapter explains operations you can perform using the Administrator Tools screen of the Web Image Monitor.

Setting Heap / Stack Size

Change the settings of "Heap Size" ^{*1} and "Stack Size" ^{*2} for Type-J extended features.

^{*1} "Heap" refers to a memory area used by Java™ Platform and related applications.

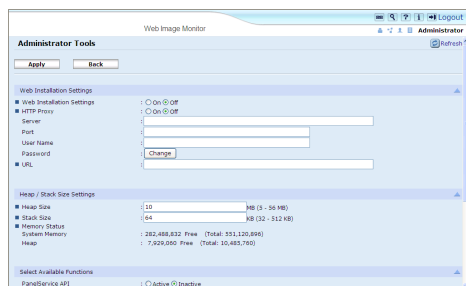
^{*2} "Stack" refers to a memory area used to store temporary data for an application.

1. Display the configuration menu screen on Web Image Monitor.

2. In "Extended Feature Settings", click [Administrator Tools].

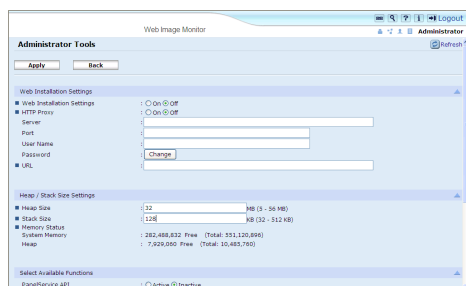
The screen for setting "Heap Size" and "Stack Size" appears. The current "Free" and "Total" capacity of System Memory and Heap appear at the bottom of the screen.

For details about items on the Administrator Tools screen, see "Administrator Tools Screen".



3. Enter the values for "Heap Size" and "Stack Size".

4. Click [Apply].



5. Click [Back].

Note

- To set [Administrator Tools], you must login as an administrator. For details, see "Logging in as an Administrator".

- You can specify [Heap / Stack Size Settings] only.
- Changed settings are activated after the device has been rebooted.
- The default "Heap Size" is 10 MB , and the default "Stack Size" is 64 KB.

Reference

- p.14 "Administrator Tools Screen"
- p.7 "Logging in as an Administrator"
- p.7 "Displaying the Operation Screen"

7. Appendix

Trademarks

Java and all Java-based trademarks and logos are trademarks or registered of Sun Microsystems, Inc. in the United States and other countries.

INDEX

A

Administrator Tools screen..... 14

C

Change Allocation screen..... 13

Changing allocated function keys.....31

D

Displaying extended feature information.....29

Displaying the operation screen.....7

E

Extended Feature Info screen..... 11

L

Logging in as an administrator.....7

S

Setting Heap / Stack Size.....35

Setting priority.....27

Starting and Stopping extended features.....23

Starting extended features.....23

Startup Setting screen.....9

Stopping extended features.....25

T

This manual.....6

Type-C extended features.....5

Type-J extended features.....5

Types of extended features.....5

W

Web Image Monitor operations screens.....9

What are extended features?.....5

MEMO

VM Card Operating Instructions Extended Feature Settings Web Reference

